

2000 Fact Sheet
Physical Therapist Education Programs
October, 2000

This Fact Sheet is designed to provide the education community with current and historical information about physical therapist education programs, students and faculty. The data included in this Fact Sheet are taken from the following sources:

- The 2000 Biennial Accreditation Report, completed in April 2000 by all accredited and developing PT programs (n=212)
- The survey by the Education Division about 2000 admissions, completed by programs in September 2000
- The 1998 Biennial Accreditation Report
- Previous surveys of the PT educational programs conducted by the Education Division
- Department of Accreditation records

This report describes programs in the United States. Data about accredited programs in other countries is not included in this Fact Sheet.

CONTENTS

The “Average” PT Program.....	2
Program Data	
Numbers of Programs	3
Distribution of Programs	5
Costs of Professional Education	8
Length of Programs.....	9
Curricular Formats and Models	11
Credits Required	11
Clinical Education.....	12
Outcomes	14
Student Data	
Admissions.....	15
Enrollment	16
Graduates	18
Faculty Data	
Number	20
Student to Faculty Ratios	20
Workload	21
Years as Faculty	21
Demographics	22
Degrees Held, Rank, Tenure Status	24
Salaries	27

**THE AVERAGE
U.S. PHYSICAL THERAPIST EDUCATION PROGRAM
1999-2000**

Type of Institution	Public (51.4%)	
Geographic Location	Middle Atlantic (20.4%) (NJ, NY, PA)	
Costs	Public	Private
Annual tuition	\$4,977	\$17,714
Annual fees	\$741	\$777
Total cost of professional program (not incl. room & board)	\$18,013	\$50,556
1999 Admissions		
Planned class size	42.7	
Number of applicants	164.7	
Number of qualified applicants	129.9	
Number of applicants offered place in class	70.4	
Number of applicants enrolled	40.2	
GPA of students enrolled	3.45	
Enrollment in all classes		
Total number of students enrolled	96.1	
Percent women	65.7%	
Percent minority	12.9%	
Outcomes		
Degree awarded in 1999	MPT (47.3%)	
Number of graduates	42.8	
Graduation rate for Class of 1999	92.3%	
Percent minority graduates	10.9%	
Pass rate on licensure exam of first-time takers	81.4%	
Employment rate at 6 months post graduation	78.8%	
Length of Program		
Curricular format	3+3 (21.4%)	
Number of weeks in class (didactic/laboratory)	79.9	
Number of weeks in FT clinical education	27.5	
Total weeks in program	107.4	
Number contact/clock hours in class (didactic/laboratory)	1631.4	
Number of contact/clock hours in clinical education	1136.1	
Total contact/clock hours in program	2770.6	
Curriculum		
Academic Calendar	Semesters (85.2%)	
Curricular model	Traditional (40.6%)	
Curricular schedule	Full-time day (97.7%)	
Number of semester credits in prerequisite phase	96.3	
Number of semester credits in professional phase	95.3	
Total semester credits required	191.4	

Clinical Education

Number of clinical education sites	277
Number of new clinical education sites	19
Number of sites that reduced placements	22
Number of sites that cancelled a planned placement	12
Number of sites that would not take students	74

Number of weeks to negotiate a contract	11.5
---	------

Faculty (developing programs not included)

Number of full-time core faculty	8.4
Number of part-time core faculty	2.7
Number of FTE core faculty	8.9
Number of adjunct faculty	12.4
Number of supportive faculty	4.7

Core faculty to student ratio	1 : 10.8
-------------------------------	----------

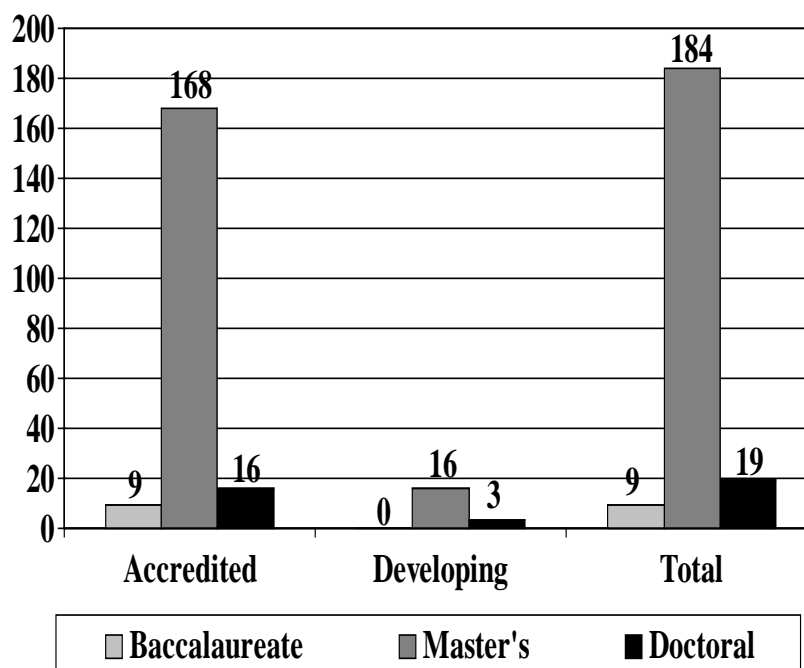
Faculty to student ratio in laboratories	1 : 13
--	--------

Faculty practice in place	No (64.7%)
---------------------------	------------

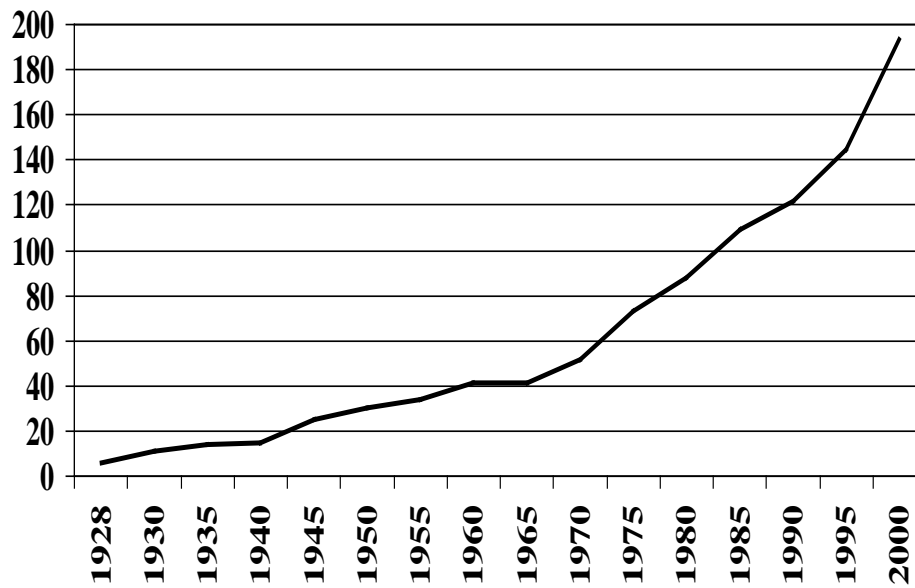
Full-time faculty characteristics

	Director	ACCE	Faculty
Age	50.3	43.5	43.9
Teaching contact hours per week	5.8	7.0	9.6
Total years as faculty	18.3	7.8	10.1
Years as faculty in current program	10.3	6.1	7.1

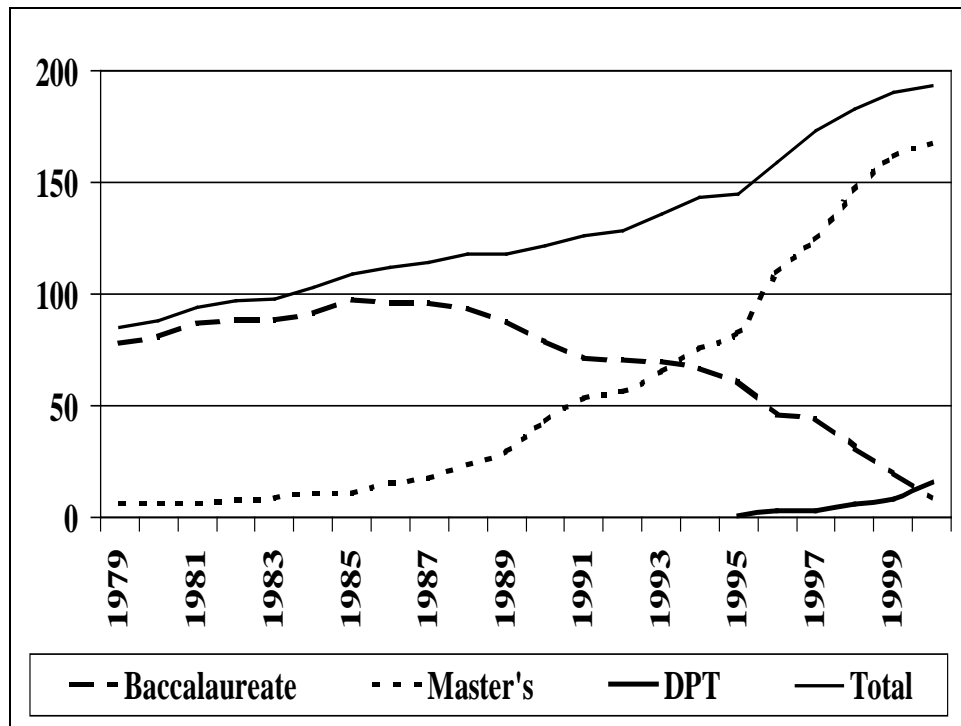
**Number of Accredited and Developing Programs
By Degree Offered (9/2000)**



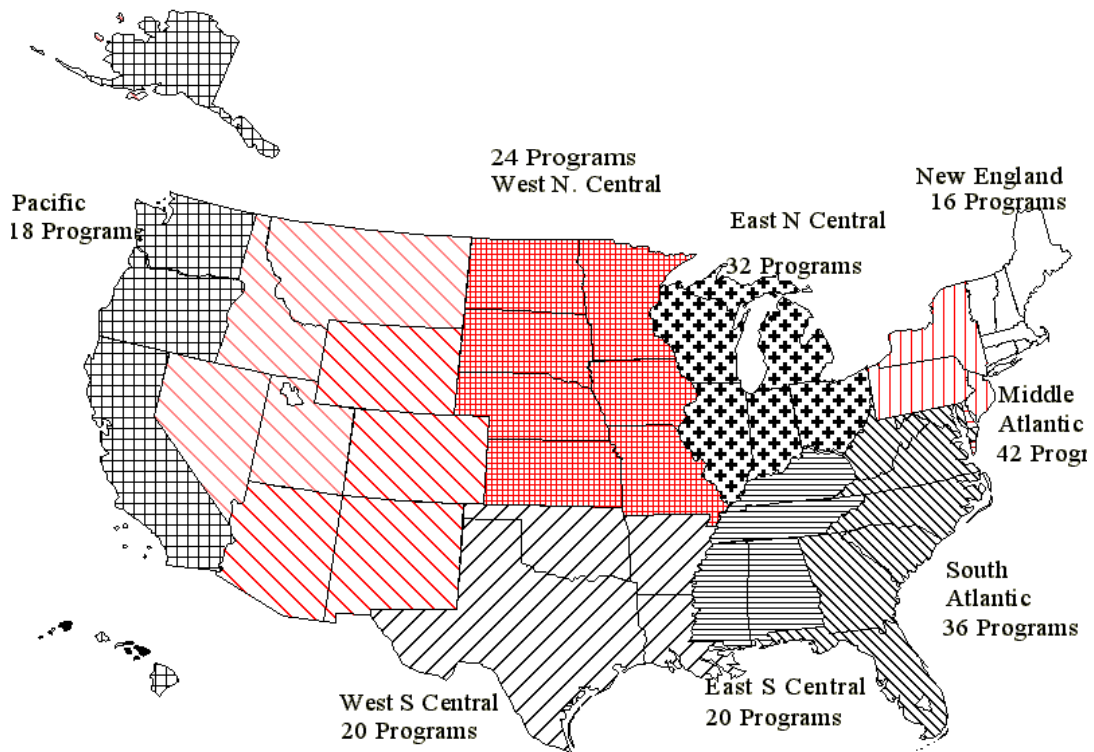
Number of Accredited Programs 1928 – 5/2000



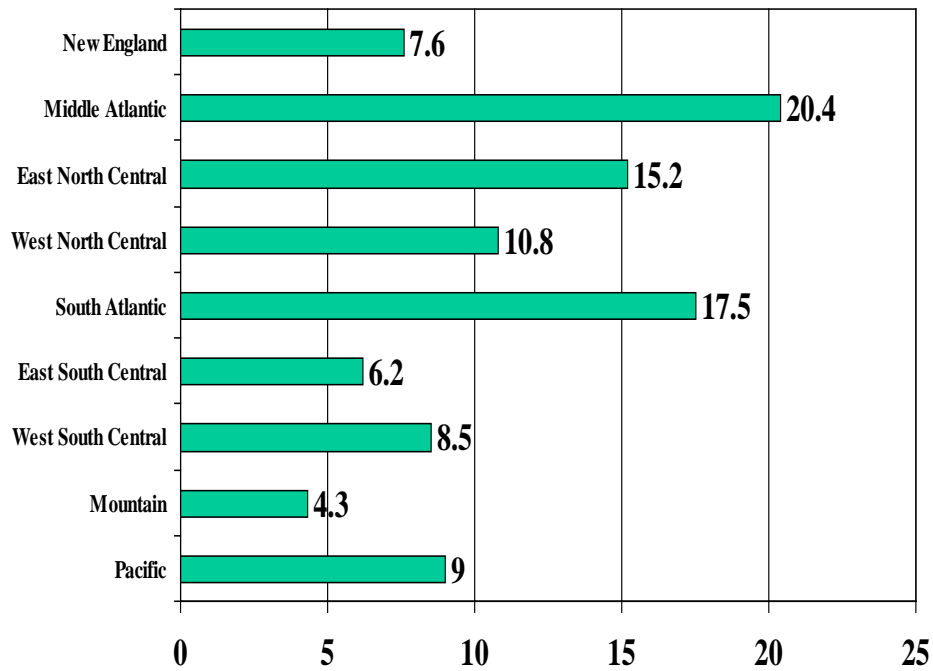
**Number of Accredited Programs by Degree Offered
1979 – 9/2000**



Distribution of Programs By Geographical Region



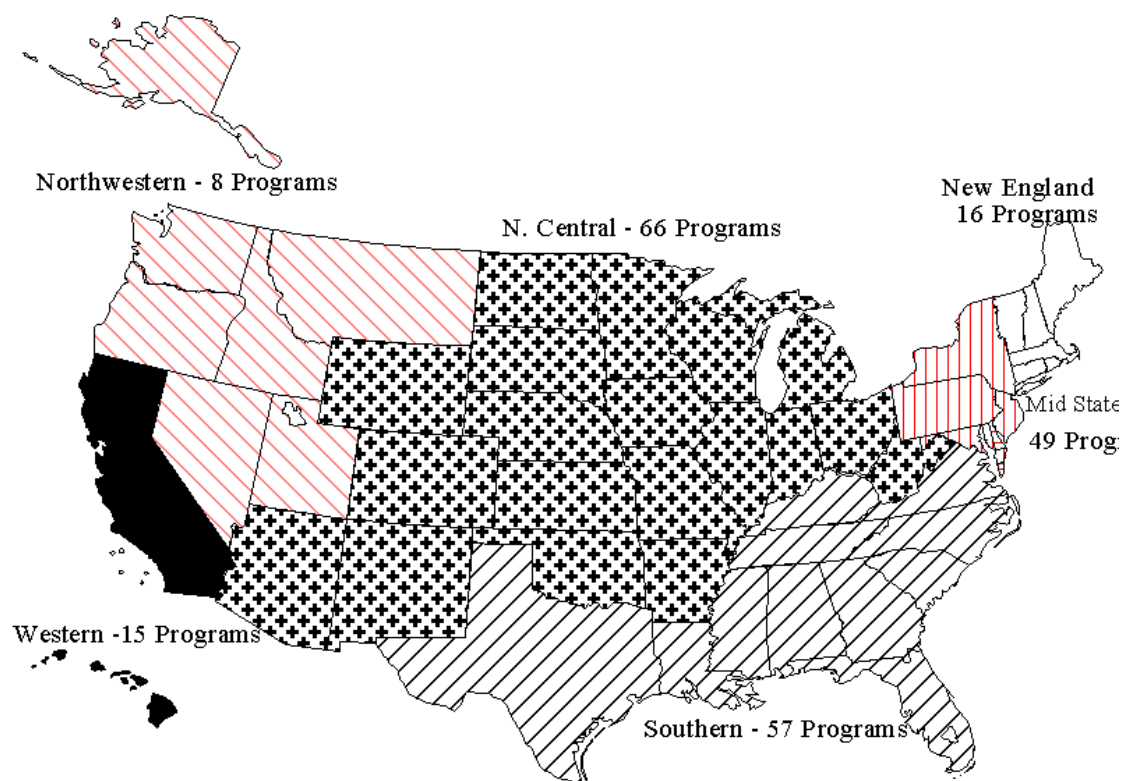
Percentage of Programs by Geographic Region



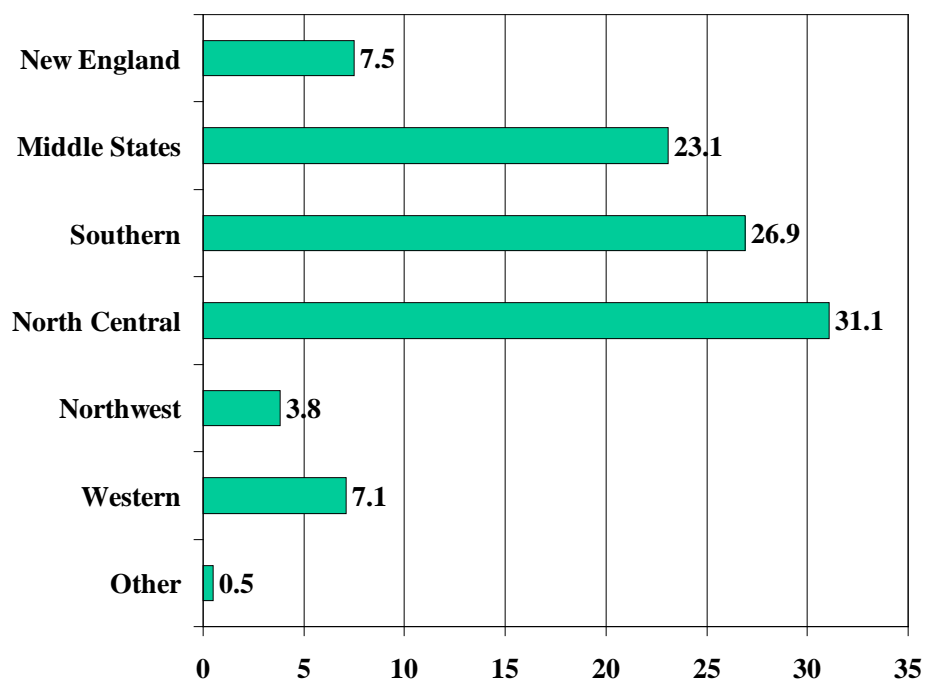
Number of Programs in Each State by Degree
Conferred in 2000 by Accredited Programs or Planned by Developing Programs
(B=Baccalaureate, M=Master=s, D=Doctoral)

Degree	Accredited			Developing			Degree	Accredited			Developing		
	B	M	D	B	M	D		B	M	D	B	M	D
Alabama		3			1		Montana		1				
Alaska							Nebraska		1	1			
Arizona		2					Nevada					1	
Arkansas	1	1					New Hampshire					1	
California	2	11	2				New Jersey		3				1
Colorado		2					New Mexico	1					
Connecticut		4					New York	3	14	1		4	
Delaware		1					North Carolina		5	1			
District of Columbia		1			1		North Dakota		2				
Florida	1	7			2		Ohio	6	3			2	
Georgia		6					Oklahoma		2				
Hawaii							Oregon		1				
Idaho		1					Pennsylvania		14	1		1	
Illinois	2	5					Puerto Rico	1					
Indiana	1	2					Rhode Island		1				
Iowa		4					South Carolina		2				1
Kansas		3			1		South Dakota		1				
Kentucky		3					Tennessee		4			1	
Louisiana		2					Texas		12			1	
Maine		2					Utah		1				
Maryland		2					Vermont	1					
Massachusetts	1	6					Virginia		4				1
Michigan		6					Washington	1	2				
Minnesota		4					West Virginia	1	1				
Mississippi		1					Wisconsin		5				
Missouri	1	5			1		Wyoming						

Distribution of Programs By Accrediting Region



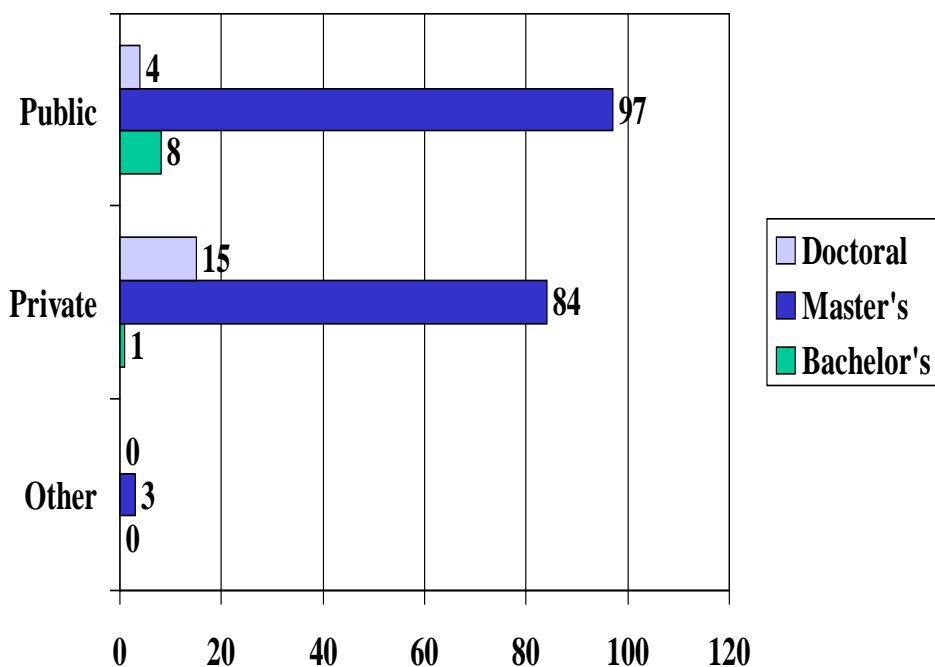
Percentage of Programs by Accrediting Region



Distribution of Programs by 1994 Carnegie Classification

Classification	Number of Programs
Research I	31
Research II	8
Doctoral I	13
Doctoral II	19
Masters I	68
Masters II	16
Baccalaureate I	2
Baccalaureate II	16
Specialized: Medical	39
Specialized: Business	1
Specialized: Other	3
Not classified	2

Distribution of Programs By Type of Institution (9/2000)



Costs of Professional Education

		Public	Private
Average annual tuition	Mean	\$4,976.86	\$17,714.16
	Median	\$4,344	\$17,000
	Range	\$0 - \$34,960	\$10,655-\$56,650
Average annual fees	Mean	\$741.12	\$777.00
	Median	\$546.25	\$277.00
	Range	\$0 - \$3567	\$0 - \$28,080
Total cost of professional program (not incl. room & board)	Mean	\$18,013	\$50,555.99
	Median	\$15,620	\$48,750
	Range	\$1,176 - \$83,130	\$12,210 - \$183,000

Length (in weeks) of Professional Curriculum (all degree levels)

Academic Phase (Classroom and Laboratory Instruction)	Mean	Range
1987-88	58.58	22-116
1988-89	62.10	22-236
1989-90	62.35	32-145
1990-91	60.31	43-120
1991-92	66.22	29-119
1992-93	68.71	36-158
1995-96	68.99	20-160
1997-98	-	-
1999-2000	79.9	46-154
Full-time Clinical Education		
1987-88	23.36	13-72
1988-89	23.42	15-72
1989-90	23.63	11-69
1990-91	24.67	17-72
1991-92	25.70	16-72
1992-93	27.57	16-76
1995-96	27.99	14-60
1997-98	-	-
1999-2000	27.5	17-52
Total Length		
1987-88	82.09	42-167
1988-89	85.37	44-256
1989-90	85.98	50-156
1990-91	85.51	63-167
1991-92	91.65	51-167
1992-93	83.47	50-166
1995-96	96.18	40-188
1997-98	-	-
1999-2000	107.4	70-178

Length of Professional Program

		All Programs	Baccalaureate	Masters	Doctorate
Number of weeks between start of program and graduation (includes vacation weeks)	Mean	131.2	121.3	133.1	153.8
	Range	81-261	89-210	81-261	91-196
Number of weeks in didactic portion	Mean	79.9	71.8	80.3	93.4
	Range	46-154	46-134	46-154	72-148
Number of weeks in FT clinical education	Mean	27.5	23.8	27.4	40.1
	Range	17-52	17-30	18-46	28-52
TOTAL number of weeks in program	Mean	107.4	95.6	107.7	133.6
	Range	70-178	70-158	70-178	108-176
Number of contact/clock hours in didactic portion	Mean	1631.4	1410.5	1642.2	2001.3
	Range	605-3150	605-2160	889-3150	1568-2600
Number of contact/clock hours in FT clinical education	Mean	1136.1	984.8	1136.1	1539.8
	Range	680-2080	680-1200	796-2000	1040-2080
TOTAL number of contact/clock hours in program	Mean	2770.6	2408.6	2779.2	3541.1
	Range	1789-4348	1802-3120	1789-4310	2759-4348

Curricular Format: Number of Programs by Preprofessional and Professional Years

		Professional Years				
		2	2.2 – 2.8	3	3.5	4
Pre-professional years	1	-		2		
	2	8	10	21	8	1
	2.5		2	2		
	3	3	10	44		1
	4	37	40	21	1	1

Academic Calendar

Semesters	85.6%
Quarters	10.9%
Other	3.8%

Curricular Format: Schedule

Full-time day program	97.1%
Week-end program	1.9%
Part-time day program	0.5%
Other	0.5%

Curricular Model

Traditional	the curriculum begins with basic science, followed by clinical science and then by physical therapy science	40.6%
Systems-based	the curriculum is built around physiological systems (musculoskeletal, neuromuscular, cardiopulmonary, etc.)	21.8%
Modified Problem-based	the curriculum uses the problem-based model in the later stages, but the early courses (primarily basic sciences) are presented in the more traditional format of lecture and laboratory	14.9%
Case-based	the curriculum utilizes patient cases as unifying themes throughout the curriculum.	5.9%
Problem-based	the entire curriculum (including basic and clinical science content) is built around patient problems that are the focus for student-centered learning through the tutorial process and independent activities	5.4%
Guide-based	the curriculum is built around the disability model, the patient management model, and the preferred practice patterns included in the <i>Guide to Physical Therapist Practice</i>	3.4%
Lifespan-based	the curriculum is built around the physical therapy needs of individuals throughout the lifespan (e.g., the basic and clinical sciences and patient management skills, etc., related to the neonate are presented together, followed by those of childhood, adolescence, early adulthood, middle age and old age)	3.0%
Other	the curriculum is designed as some combination of the above	4.9%

Preprofessional and Professional Credits Required By Level of Program

		Baccalaureate	Master's	Doctoral	All Programs
Pre-professional	Mean	66.5	99.3	116.7	96.3
	Range	29-93	46-132	90-120	29-132
Professional	Mean	83.0	95.5	121.4	95.3
	Range	55-118	58-155	98-133	55-155
Total	Mean	149.1	194.5	238.1	191.4
	Range	127-209	133-287	218-253	127-287

Clinical Education

Number of Programs With Part-time or Full-time Experiences

Number of Experiences Required	Part-time	Full-time
0	128	
1	27	1
2	13	2
3	18	64
4	9	79
5	1	33
6		19
7		3

Length of Final Clinical Education Experience

		All Programs	Baccalaureate	Master's	Doctoral
Number of weeks in final clinical experience	Mean	13.9	14.6	13.4	22.7
	Range	4-40	6-24	4-40	12.40

Clinical Education Trends

	1995-96	1996-97	1997-98	1998-99	1999-00
Mean number of sites	203	221	244	266	277
Mean number of new sites	34	35	32	22	19
Mean number of sites that reduced placements	21	26	36	21	22
Mean number of sites that cancelled a scheduled placement	10	15	12	17	12
Mean number of sites that would not take students	44	49	62	56	77

Percent of placements cancelled by Type of Facility

(n=4382)

Acute Care/Hospital Facility	26.1
Ambulatory Care/Out-patient Center	17.6
ECF/Nursing Home/SNF	19.3
Federal/State/County Health	0.9
Home Health Care	2.2
Industrial Rehab Facility	0.7
Private Practice	13.3
Rehab/subacute Rehab	14.3
School/Preschool	3.9
Wellness/Prevention	0.5
Other	1.1

Reasons given for cancellation of placements

(n=681)

Staff turnover	26.1%
Medicare reimbursement issues	22.2%
Level of staff experience	19.2%
Conflict with productivity demands	14.7%
Reimbursement issues (other than Medicare)	10.7%

Mean length of time it takes to negotiate a contract with a clinical site:

11.5 weeks (Range: 1-52)

Issues in the Clinical Education Program

	% Responding "Yes"
Changed a requirement that students have certain types of experiences (e.g. rehab, acute care)?	15.5
Split or segmented a class in order to accommodate clinical education placements?	11.4
Students been placed in clinical sites for which they have not had prior didactic instruction?	15.0
Students been placed in clinical sites at which clinical educators have not been adequately prepared?	10.9
Delayed student(s) graduation to accommodate clinical placements?	5.7
Reduced the overall class size to be able to ensure clinical placements in the future?	8.3

Outcomes

Number of Degrees Conferred by Accrediting Region (1999)

Region	Baccalaureate	Postbaccalaureate	TOTAL
New England	304	561	865
Middle States	400	1275	1675
Southern	403	1499	1902
North Central	530	1683	2213
Northwest	23	139	162
Western	64	381	445
Other		149	149
TOTAL	1724	5687	7411

Graduation Rates

Graduating class	1997	1998	1999
Mean graduation rate	93.6%	93.4%	92.3%
Range	39.5-100	65.4-100	55-100

Pass Rates of First Time Takers on Licensure Exam

	1995	1996	1997-98	1998-99
Mean	95%	90%	81.3%	81.4%
Range			0-100	20-100

Pass Rates of First Time Takers

Pass Rate	Number of Programs	
	97-98	98-99
0-9%	1	
10-19%	1	
20-29%	-	2
30-39%	2	2
40-49%	5	1
50-59%	5	5
60-69%	13	25
70-79%	24	24
80-89%	42	58
90-99%	49	45
100%	11	8
Total	153	170

Employment Rates at 6 months post graduation

	1995	1996	1997	1998	1999
Mean	98%	96%	91.6%	90.4%	78.8%
Range			0-100	13-100	0-100

Trends in Admissions

		1995	1996	1997	1998	1999	2000*
Planned class size	Mean	43.6	43.4	45.2	44.0	42.7	38.9
	Range	--	--	12-168	10-168	12-168	12-120
Number of applicants	Mean	342.2	298.5	265.3	215.8	164.7	126.1
	Range	--	--	18-1099	10-692	10-726	6-820
Number of qualified applicants	Mean	246.5	217.4	198.4	168.8	129.9	102.1
	Range	--	--	14-831	10-621	10-726	1-779
Number of applicants offered place in class	Mean	61.8	63.6	72.3	71.4	70.4	60.1
	Range	--	--	14-341	9-291	3-347	1-295
Number enrolled	Mean	43.0	43.0	44.7	43.1	40.2	35.6
	Range	--	--	11-160	10-162	7-160	0-182
GPA of students enrolled	Mean	3.50	3.51	3.50	3.49	3.45	N/A
	Range	--	--	3.05-3.89	2.91-3.81	2.98-3.81	

*data from Education Division survey

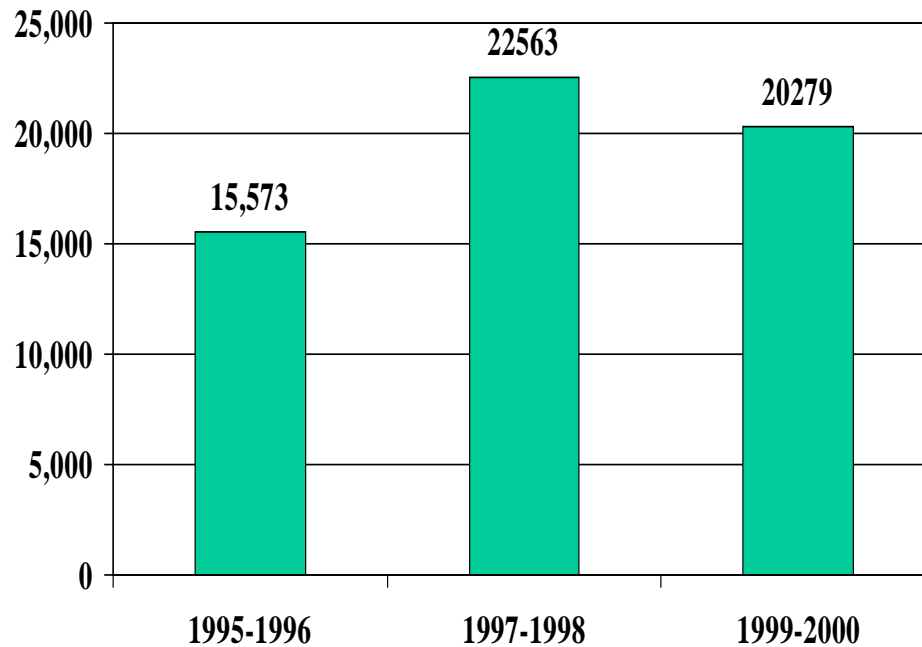
Admissions Trends by Public/Private Institutions

		Public				Private			
		1997	1998	1999	2000	1997	1998	1999	2000
Planned class size	Mean	41.3	39.8	38.9	38.9	49.1	48.3	46.3	46.1
	Range	12-100	16-100	16-100	12-90	24-168	10-168	12-168	15-120
Number of applicants	Mean	238.6	190.5	139.5	120.8	295.5	244.9	191.43	133.2
	Range	18-678	28-616	20-435	6-820	24-1099	10-692	10-726	25-588
Number of qualified applicants	Mean	173.9	143.8	105.6	95.3	226.3	198.4	156.0	111.2
	Range	14-678	18-541	10-405	1-779	24-831	10-621	10-726	18-588
Number of applicants offered place in class	Mean	58.3	57.2	56.4	47.5	86.9	86.8	84.9	76.8
	Range	14-165	9-170	3-192	1-295	24-341	10-291	7-347	16-295
Number enrolled	Mean	41.1	39.5	37.4	34.5	48.1	46.8	42.9	37.1
	Range	11-105	16-100	7-99	0-182	17-160	10-162	7-160	2-110
GPA of students enrolled	Mean	3.56	3.54	3.50	N/A	3.44	3.43	3.40	N/A
	Range	3.06-3.89	2.91-3.81	3.05-3.81		3.12-3.80	3.00-3.80	2.98-3.74	

1999 Admissions by Degree Awarded

		Baccalaureate	Master's	Doctoral
Planned class size	Mean	44.2	42.4	37.6
	Range	24-100	12-168	15-60
Number of applicants	Mean	135.1	167.4	168.1
	Range	28-416	10-726	20-306
Number of qualified applicants	Mean	110.4	131.7	133.6
	Range	28-416	10-726	15-297
Number of applicants offered place in class	Mean	63.8	71.0	67.1
	Range	28-210	3-347	19-124
Number enrolled	Mean	45.2	39.6	36.9
	Range	24-105	7-160	14-59
GPA of students enrolled	Mean	3.49	3.45	3.49
	Range	3.20-3.79	2.98-3.79	3.20-3.69

Enrollment in PT Programs
1995-1996 Estimated, 1997-2000 Actual



Enrollment by Sex

		Female	Male	Total
Number of students in all programs		13,866	6,412	20,279
Number of students per program	Mean	65.7	30.4	96.1
	Range	4-427	0-157	7-574

Percentage of Enrollees
by Degree Held on Admission to Professional Program

Degree Held	% enrolled
None	42.4
Baccalaureate	51.9
Master's	5.7
Doctoral	0.01

Percentage of Enrollees Who Were PTAs prior to Enrollment: 0.8%

Percentage of Students Enrolled by Accrediting Region

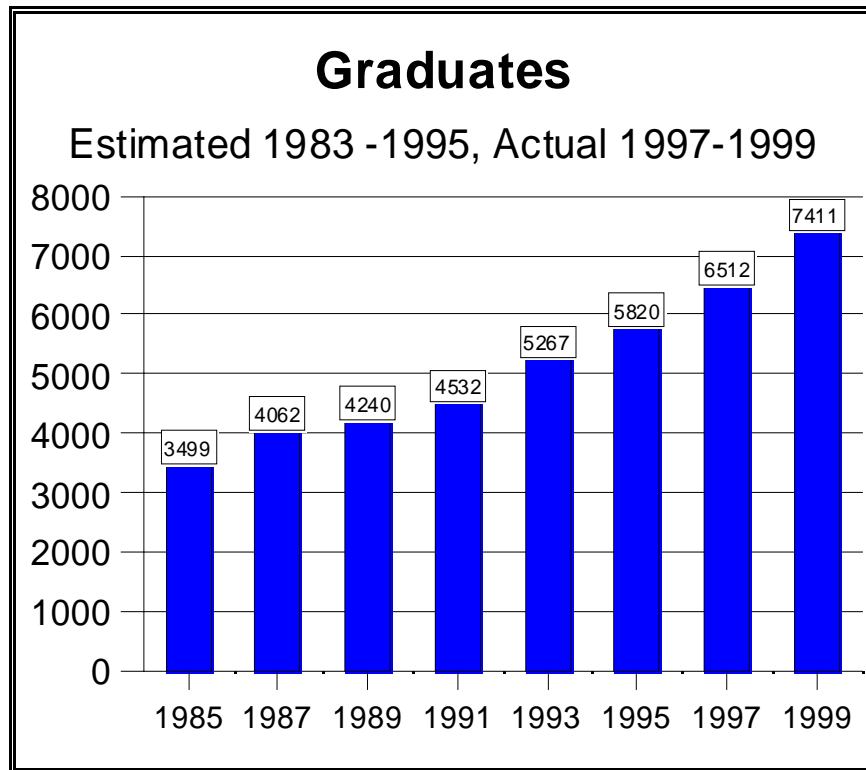
Region	1989	1990	1991	1992	1993	1995	1997	1999
New England	17.7	13.5	16.1	14.7	14.0	13.3	12.6	13.7
Middle States	26.1	27.2	26.7	26.0	28.0	26.7	25.5	21.6
Southern	17.0	18.4	19.4	19.6	17.7	21.7	21.0	22.5
North Central	26.8	28.5	25.6	27.0	25.4	24.8	30.6	32.5
Northwest	2.6	3.5	3.6	3.3	3.0	3.3	2.4	2.4
Western	7.7	6.8	6.3	7.4	10.1	7.5	6.7	5.8
Other	2.1	2.1	2.3	2.0	1.8	2.7	1.0	1.6

Percentage of Enrollment by Geographical Region

Geographical Region:	States	Enrollment AY 97-98	Enrollment AY 99-00
New England:	CT, ME, MA, NH, RI, VT	12.8	13.7
Middle Atlantic:	NJ, NY, PA	24.8	19.6
East North Central:	IL, IN, MI, OH, WI	14.4	15.2
West North Central:	IA, KS, MN, MO, NE, ND, SD	10.6	11.7
South Atlantic:	DE, DC, FL, GA, MD, NC, SC, VA, WV	14.4	16.9
East South Central:	AL, KY, MS, TN	4.5	4.8
West South Central:	AR, LA, OK, TX	6.6	7.2
Mountain:	AZ, CO, ID, MT, NV, NM, UT, WY	3.5	3.4
Pacific:	AK, CA, HI, OR, WA	8.4	7.5

Ethnicity of Students Enrolled in Professional Physical Therapist Programs

	95-96 n=15,573	97-98 n=22,174	99-00 N=20,270
American Indian	0.2%	0.4%	0.4%
Asian	2.2%	4.9%	5.1%
African American	1.8%	2.6%	3.2%
Caucasian	93.4%	88.7%	86.0%
Hispanic	1.8%	2.6%	3.2%
Other	0.6%	0.8%	0.9%
Unknown	N/A	N/A	1.1%



Number of Graduates per Program

		1995	1996	1997	1998	1999
All Programs	Mean	42	43	42.4	35.8	36.9
	Range	--	--	12-128	5-133	10-149
Baccalaureate programs	Mean			43.6	42.3	41.5
	Range			18-96	17-112	14-122
Master's programs	Mean			42.0	42.6	43.1
	Range			12-128	5-51	10-149
Doctoral programs	Mean			43.3	43	42
	Range			28-53	30-53	30-51
Public	Mean			39.8	38.5	38.1
	Range			14-95	5-92	10-94
Private	Mean			45.8	47.6	48.1
	Range			12-128	21-133	15-149

Percentage of Graduates by Geographical Region

Geographical Region:	States	Graduates 1997	Graduates 1999
New England:	CT, ME, MA, NH, RI, VT	10.1	10.4
Middle Atlantic:	NJ, NY, PA	21.5	20.9
East North Central:	IL, IN, MI, OH, WI	14.9	15.6
West North Central:	IA, KS, MN, MO, NE, ND, SD	10.4	10.4
South Atlantic:	DE, DC, FL, GA, MD, NC, SC, VA, WV	15.9	16.8
East South Central:	AL, KY, MS, TN	7.2	5.9
West South Central:	AR, LA, OK, TX	7.6	8.4
Mountain:	AZ, CO, ID, MT, NV, NM, UT, WY	3.5	3.8
Pacific:	AK, CA, HI, OR, WA	9.0	7.7

Percentage of Graduates by Accrediting Region (1988-1999)

Region	1988	1989	1990	1991	1993	1995	1997	1999
New England	11.3	10.8	14.0	10.6	9.3	8.8	10.1	11.7
Middle States	25.3	24.3	28.1	24.4	26.8	24.1	23.4	22.7
Southern	19.4	20.3	20.9	23.6	23.3	24.5	24.6	23.5
North Central	30.3	31.1	23.3	28.5	26.3	28.0	31.5	31.8
Northwest	2.7	3.5	3.5	4.1	4.0	4.2	2.5	2.2
Western	9.4	8.5	8.3	6.9	8.3	8.3	7.2	6.0
Other	1.6	1.5	1.9	1.9	2.0	2.1	0.8	2.0

Ethnicity of Graduates of Professional Physical Therapist Programs

	1997	1998	1999
	N=6324	N=7079	N=7411
African American	2.4%	2.7%	2.4%
American Indian/Alaskan Native	0.3%	0.3%	0.4%
Asian/Pacific Islander	3.8%	3.9%	4.2%
Hispanic/Latino	2.5%	3.0%	2.7%
White	88.5%	88.1%	87.7%
Other	0.8%	0.8%	0.1%
Unknown	1.5%	1.1%	1.4%

Number of Faculty

		All programs	Baccalaureate	Masters	Doctoral
Total number of full-time core positions		1718	180	1462	76
Total number of part-time core positions		547	40	402	105
Full-time core faculty positions per program	Mean	8.4	7.5	8.6	8.4
	Range	2-25	4-21	2-25	4-12
Part-time core faculty positions per program	Mean	2.7	1.7	2.4	11.6
	Range	0-85	0-11	0-85	0-85
Number of Adjunct faculty per program	Mean	12.4	8.75	12.8	14.3
	Range	1-146	0-45	1-146	2-42
Total FTE of adjunct faculty per program	Mean	1.3	1.4	1.3	1.59
	Range	0-10.9	0-7.6	0-10.9	.25-7.7
Number of supportive faculty per program	Mean	4.7	5.0	4.8	2.3
	Range	0-126	0-46	0-126	0-6

Faculty Vacancies

		All programs	Baccalaureate	Masters	Doctoral
Total current vacancies in allocated positions		98	13	82	3
Total projected vacancies in allocated positions		79	14	64	2
Total number of new positions to be filled		49	8	39	2
Current vacancies in allocated positions per program	Mean	0.5	0.5	0.5	0.3
	Range	0-3	0-3	0-3	0-1
Projected vacancies in current positions per program	Mean	0.4	0.6	0.4	0.2
	Range	0-3	0-3	0-3	0-1
Number of new positions to be filled per program	Mean	0.24	0.3	0.3	0.2
	Range	0-3	0-3	0-3	0-1

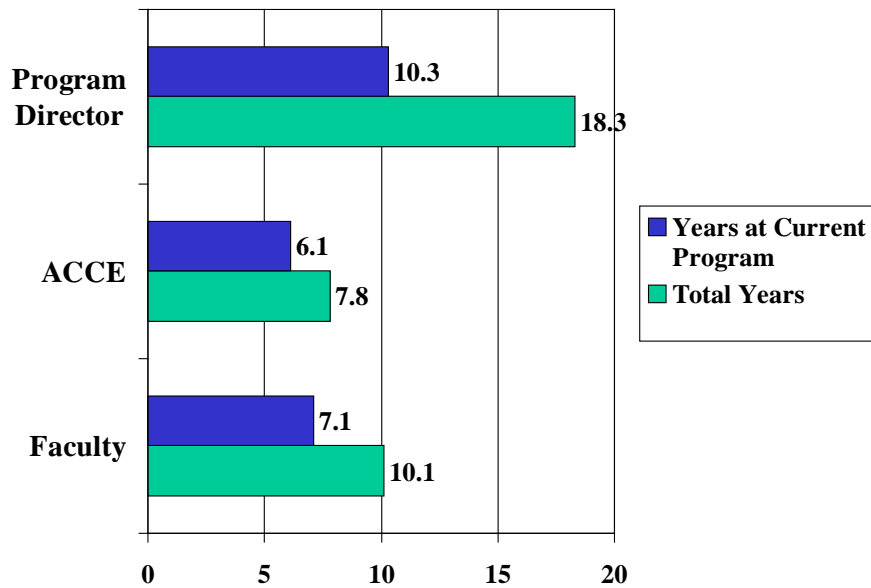
Student to Faculty Ratio

		All programs	Baccalaureate	Masters	Doctoral
Number of students per core faculty member	Mean	10.8	11.8	10.8	7.1
	Range	2-24	4-23	2-24	2.3-14.3
Student to all FTE faculty ratio	Mean	7.9	8.6	7.9	5.7
	Range	1-18	2.6-16	1-18	1.5-13.1
Student to faculty ratio in labs	Mean	13.0	13.5	13.0	11.8
	Range	5-24	6-20	5-24	7-15

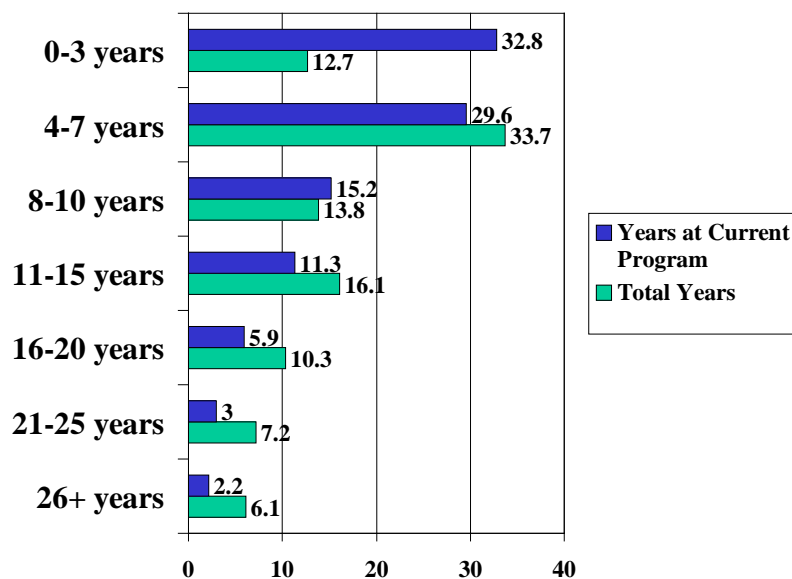
Workload: Teaching Contact Hours per Week

		All Programs	Baccalaureate	Master's	Doctoral
Program Director	Mean	5.8	6.7	5.7	5.9
	Range	0.2-17	1.5-12	0.2-17	3-10
ACCE	Mean	7.0	5.0	7.4	5.4
	Range	0.3-30	1-14	0.3-30	2-12
Faculty	Mean	9.6	10.3	9.6	8.6
	Range	0.4-37	1.5-28	0.4-37	5-17

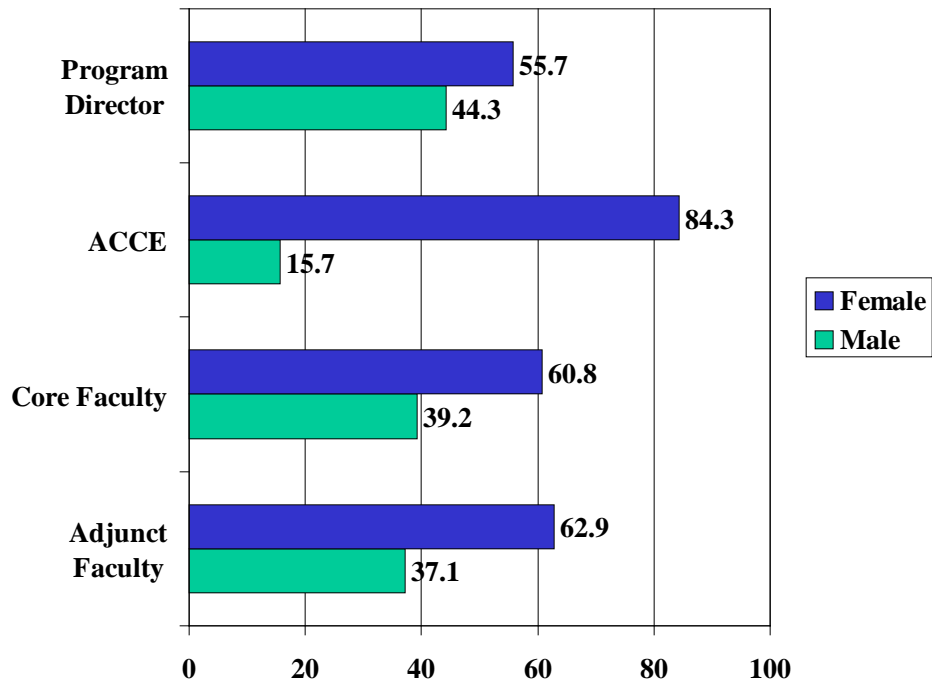
Mean Years as a Faculty Member



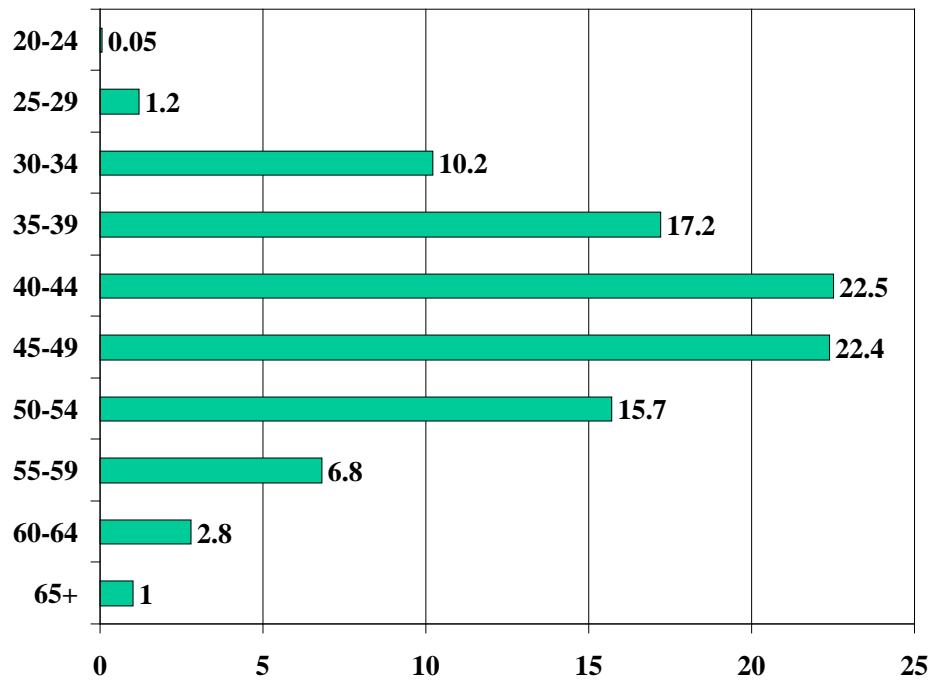
Years As Faculty Member



Sex of PT Faculty



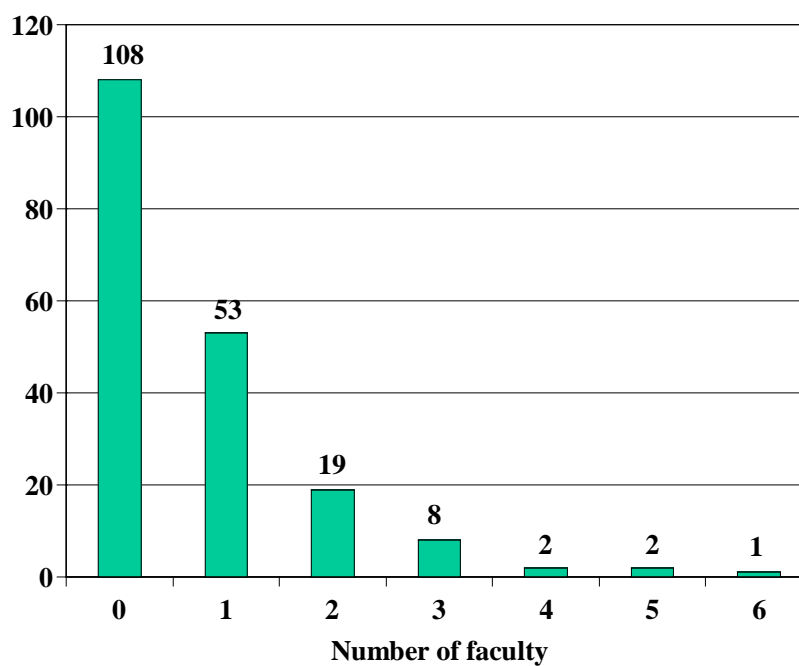
Age of Core Faculty



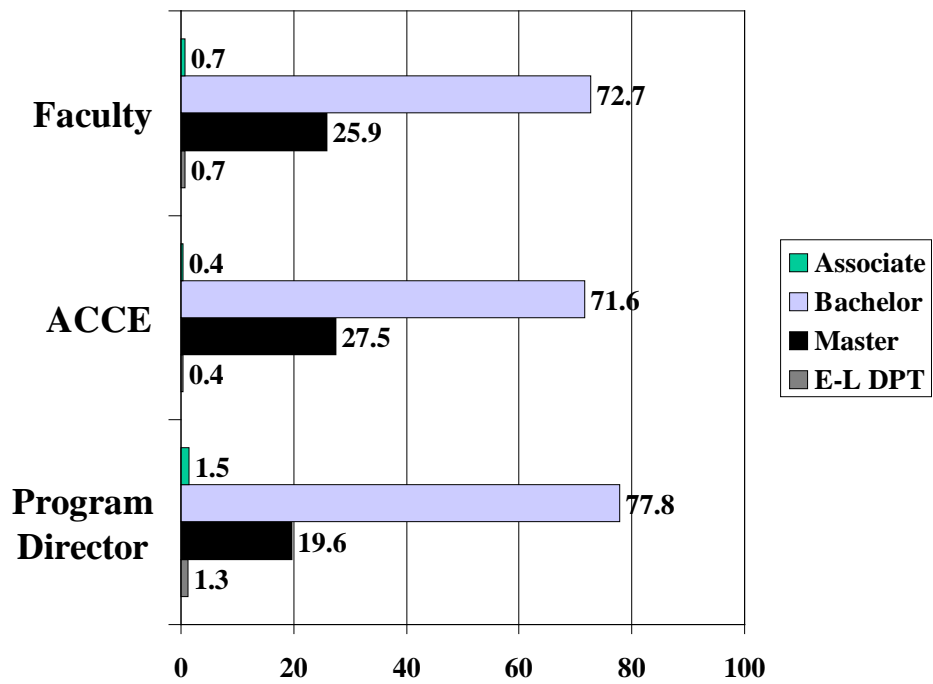
Ethnicity of Faculty

	Program Director	ACCE	Core Faculty	All Core Faculty	Adjunct Faculty
African American	4.9	4.0	2.3	2.8	2.0
American Indian	0.5	0.4	0.1	0.2	2.0
Asian	1.5	0.8	2.1	1.9	1.3
Caucasian	93.0	94.0	93.0	93.1	90.4
Hispanic	0	0.8	1.2	1.0	0.9
Other	0	0	1.3	1.0	3.3
Total	99.9%	100%	100%	100%	99.9%

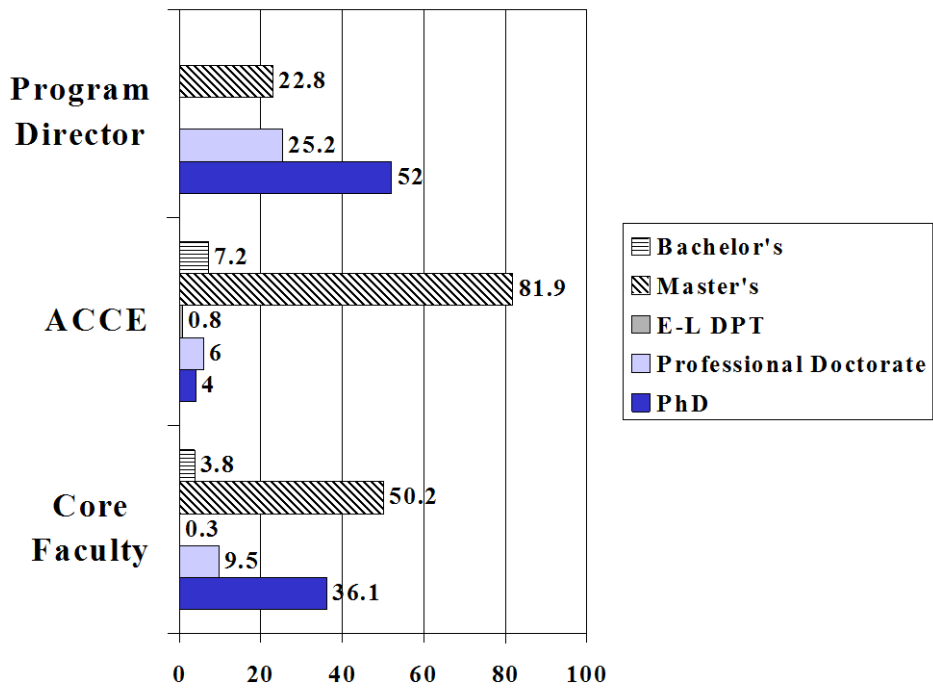
Number of Programs That Have Minority Faculty by Number of Minority Faculty



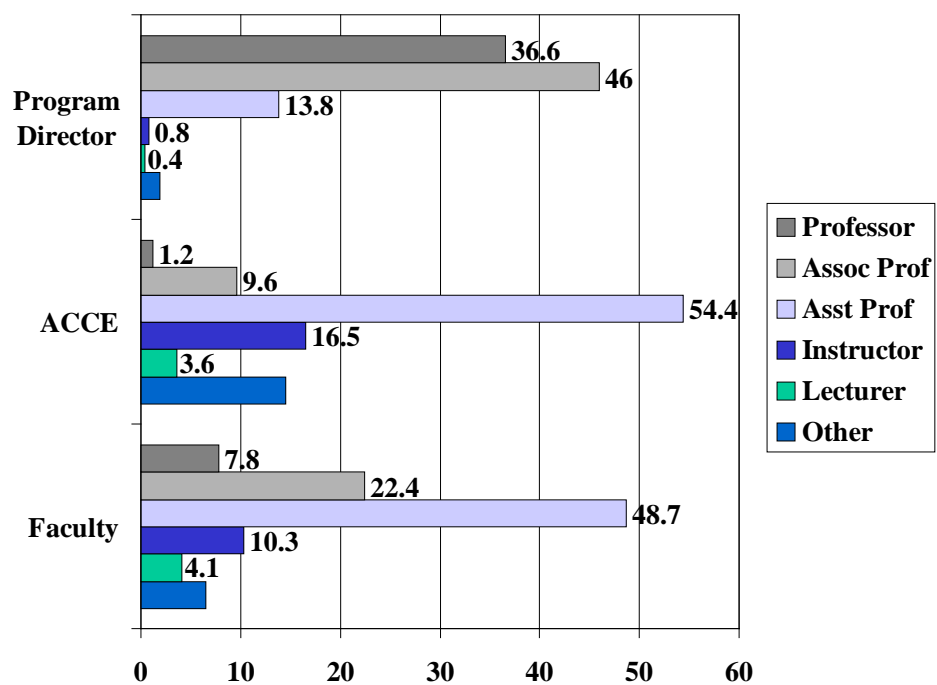
Entry-level Degrees Held by Core Faculty



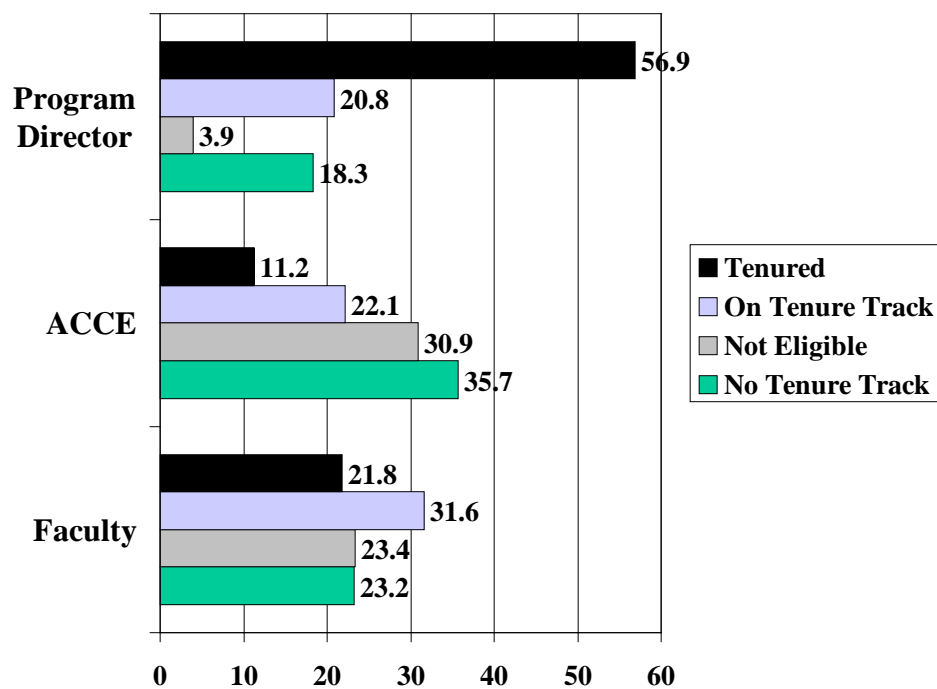
Highest Degree Held by Core Faculty



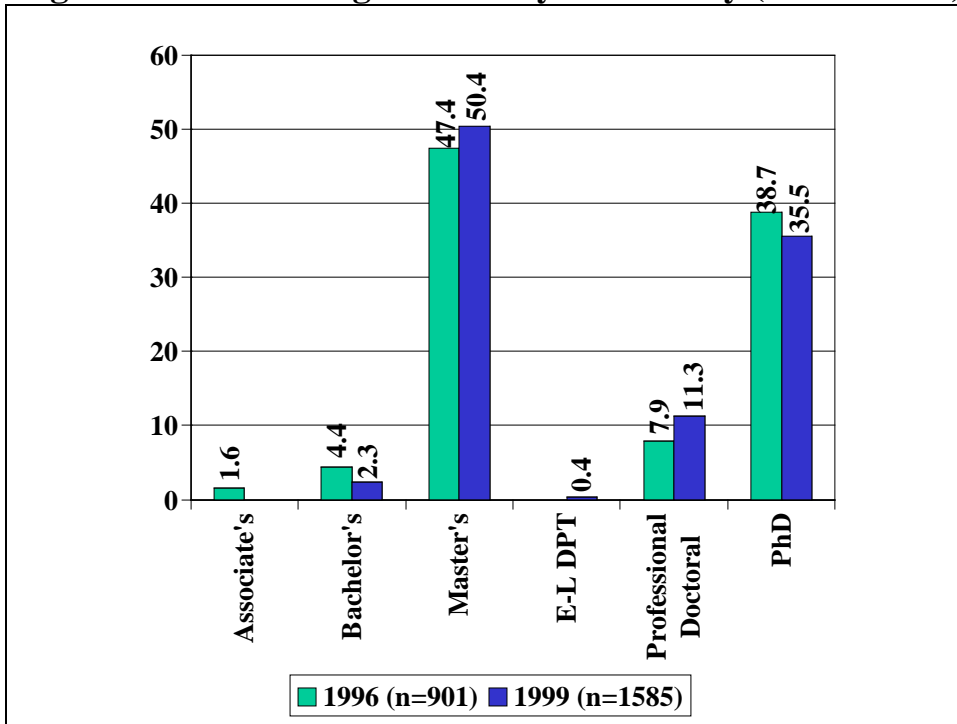
Rank of Faculty by Primary Responsibility



Tenure Status of Faculty



Highest Academic Degree Held by FT Faculty (1996 – 1999)



Highest Degree Held by Core (FT & PT) Faculty in Varying Types of Programs

	Baccalaureate		Master's		Doctoral		Total	
	N	%	N	%	N	%	N	%
Associate			1	0.1			1	0
Bachelor's	17	7.3	59	3.5			76	3.8
Master's	120	51.9	865	51.7	35	41.2	1020	51.3
Entry-Level DPT			4	0.2	4	4.7	8	0.4
Professional Doctorate	23	10.0	173	10.3	16	18.8	212	10.6
PhD	71	30.7	570	34.1	30	35.3	671	33.8
TOTAL	231	99.9	1672	99.9	85	100	1988	99.9

Salaries of Program Directors (n=161) in Physical Therapist Education Programs
by Rank, Length of Appointment and Type of Institution
AY 1999-2000

	PUBLIC INSTITUTIONS			PRIVATE INSTITUTIONS		
	9 – 9.5 months	10 – 11 months	12 months	9 – 9.5 months	10 – 11 months	12 months
LECTURER N= Mean= Median= Range=			1 ** ** **			
INSTRUCTOR N= Mean= Median= Range=			2 76,031 76,031 70,762 – 81,103			
ASST. PROF. N= Mean= Median= Range=	1 ** ** **		9 70,081 69,000 55,000 – 86,000	1 ** ** **	4 67,060 62,121 54,000 – 90,000	10 68,248 68,800 41,000 – 85,191
ASSOC. PROF. N= Mean= Median= Range=	2 63,756 63,756 63,000 – 64,512	4 74,088 71,410 64,933 – 88,600	34 80,618 80,230 63,031 – 98,000	3 62,131 63,862 48,782 – 73,749	5 83,554 88,611 65,416 – 90,100	25 86,746 88,611 59,800 – 173,056
PROFESSOR N= Mean= Median= Range=	3 77,846 79,224 65,316 – 89,000	5 88,283 90,070 76,000 – 101,455	28 92,715 87,438 69,433 – 139,000		1 ** ** **	20 91,574 89,973 61,994 – 126,000
OTHER N= Mean= Median= Range=	1 ** ** **		1 ** ** **			1 ** ** **

Salaries of ACCEs (n=187) in Physical Therapist Education Programs
by Rank, Length of Appointment and Type of Institution
AY 1999-2000

	PUBLIC INSTITUTIONS			PRIVATE INSTITUTIONS		
	9 – 9.5 months	10 – 11 months	12 months	9 – 9.5 months	10 – 11 months	12 months
LECTURER						
N=		2	5			1
Mean=		56,344	54,751			**
Median=		56,344	50,000			**
Range=		51,714 – 60,974	48,284 – 63,736			**
INSTRUCTOR						
N=	2	1	12	1	3	11
Mean=	49,802	**	54,226	**	50,466	54,126
Median=	49,802	**	54,212	**	51,400	55,000
Range=	47,604 – 52,000	**	47,561 – 64,000	**	39,140 – 60,858	44,000 – 62,000
ASST. PROF.						
N=	3	5	34	4	9	43
Mean=	52,926	58,719	59,212	57,030	50,401	60,531
Median=	54,962	58,000	59,779	53,684	49,857	60,840
Range=	48,600 – 54,962	44,800 – 76,500	47,910 – 66,973	47,427 – 73,328	40,000 – 69,633	48,373 – 73,000
ASSOC. PROF.						
N=	4	3	7	2	1	2
Mean=	55,106	56,033	68,542	52,321	**	67,287
Median=	54,744	57,400	69,073	52,321	**	67,287
Range=	50,085 – 60,853	53,300 – 57,400	56,285 – 77,373	44,357 – 60,285	**	67,000 – 67,575
PROFESSOR						
N=		1	1			1
Mean=		**	**			**
Median=		**	**			**
Range=		**	**			**
OTHER						
N=	4	2	7		5	11
Mean=	45,895	60,164	58,426		49,423	50,893
Median=	47,233	60,164	58,879		51,745	48,975
Range=	40,114 – 49,000	59,328 – 61,000	50,292 – 65,880		42,650 – 58,329	40,273 – 65,885

**Salaries of Full-time Faculty (n=961) in Physical Therapist Education Programs
by Rank, Length of Appointment and Type of Institution
AY 1999-2000**

	PUBLIC INSTITUTIONS			PRIVATE INSTITUTIONS		
	9 – 9.5 months	10 – 11 months	12 months	9 – 9.5 months	10 – 11 months	12 months
LECTURER						
N=	6	13	14		1	
Mean=	38,787	50,640	45,636		**	
Median=	38,682	49,345	45,700		**	
Range=	30,000 – 48,906	35,000 – 64,000	34,000 – 56,000		**	
INSTRUCTOR						
N=		2	31	6	6	21
Mean=		48,500	54,983	48,933	52,893	55,965
Median=		48,500	53,400	49,300	53,250	53,843
Range=		48,500 – 49,000	37,695 – 72,100	45,000 – 53,000	46,679 – 57,881	42,000 – 71,000
ASST. PROF.						
N=	67	24	140	82	52	138
Mean=	50,804	55,332	60,651	48,449	55,727	61,084
Median=	50,000	53,672	60,000	48,728	54,930	62,000
Range=	39,811 – 69,252	46,400 – 77,000	40,430 – 89,500	20,914 – 63,100	42,509 – 81,300	17,533 – 77,200
ASSOC. PROF.						
N=	45	14	75	32	16	51
Mean=	61,530	61,690	67,755	57,842	62,377	67,209
Median=	62,172	59,045	68,159	58,070	64,295	68,168
Range=	44,702 – 110,855	51,462 – 81,000	53,524 – 87,720	40,929 – 77,981	47,950 – 82,127	46,000 – 92,000
PROFESSOR						
N=	18	12	23	9	3	13
Mean=	70,447	75,738	81,350	70,139	65,334	75,172
Median=	70,070	74,442	82,500	70,870	67,000	84,000
Range=	51,225 – 89,000	69,700 – 92,553	60,000 – 125,000	58,710 – 84,838	56,700 – 72,303	50,000 – 102,000
OTHER						
N=	6	1	3	10	22	5
Mean=	45,972	**	55,361	48,057	49,058	46,800
Median=	42,332	**	57,842	47,050	46,000	46,000
Range=	30,969 – 68,842	**	50,243 – 58,000	45,000 – 53,500	42,000 – 70,707	46,000 – 50,000