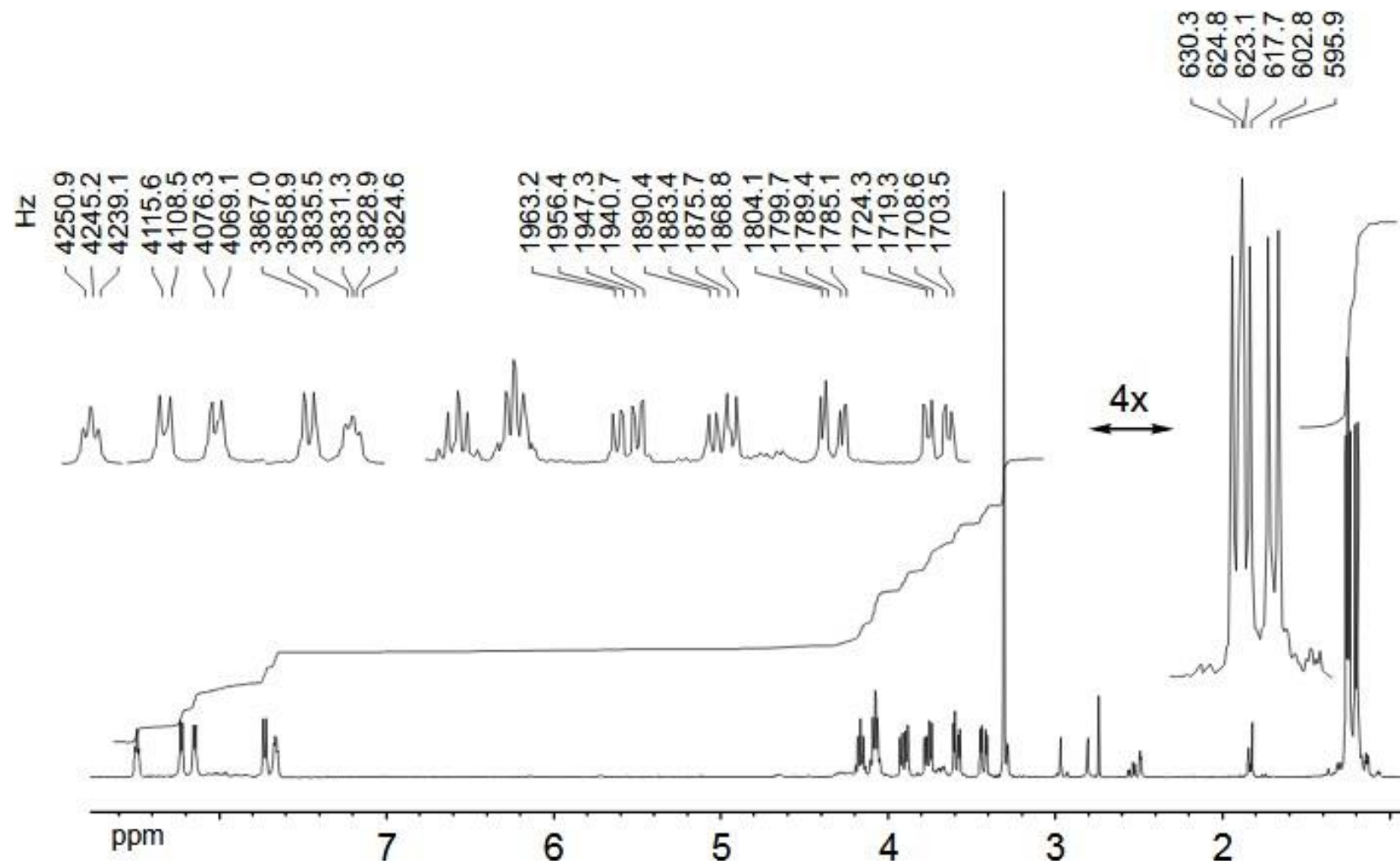


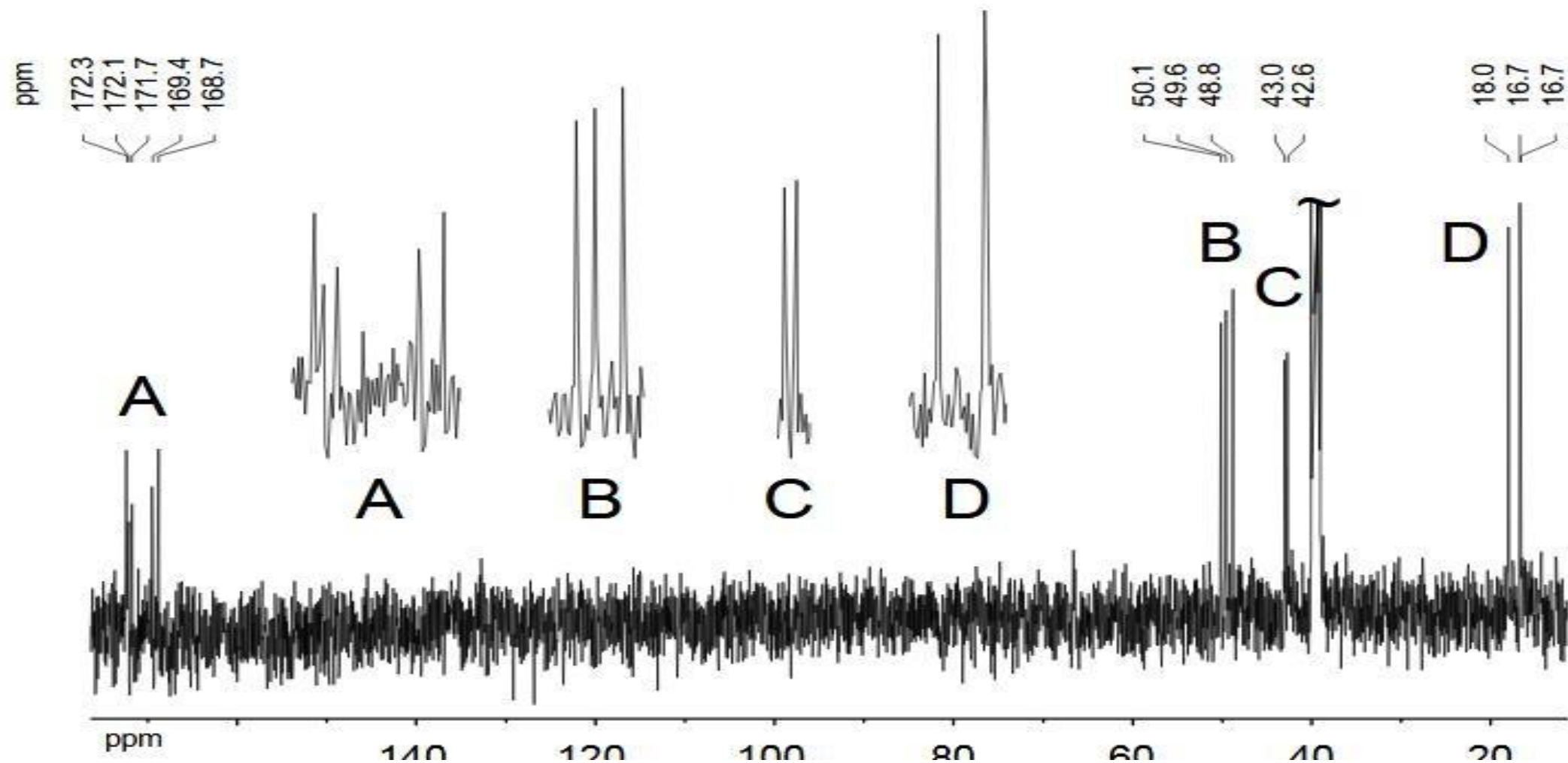
Structure Elucidation of biomolecules

- Assign the structure from the following 1D and 2 D NMR spectra of a bacterial secondary metabolite. Molecular formula by MS was determined as $C_{13}H_{21}N_5O_5$. IR absorptions were observed at 3220 and 1660 cm^{-1}

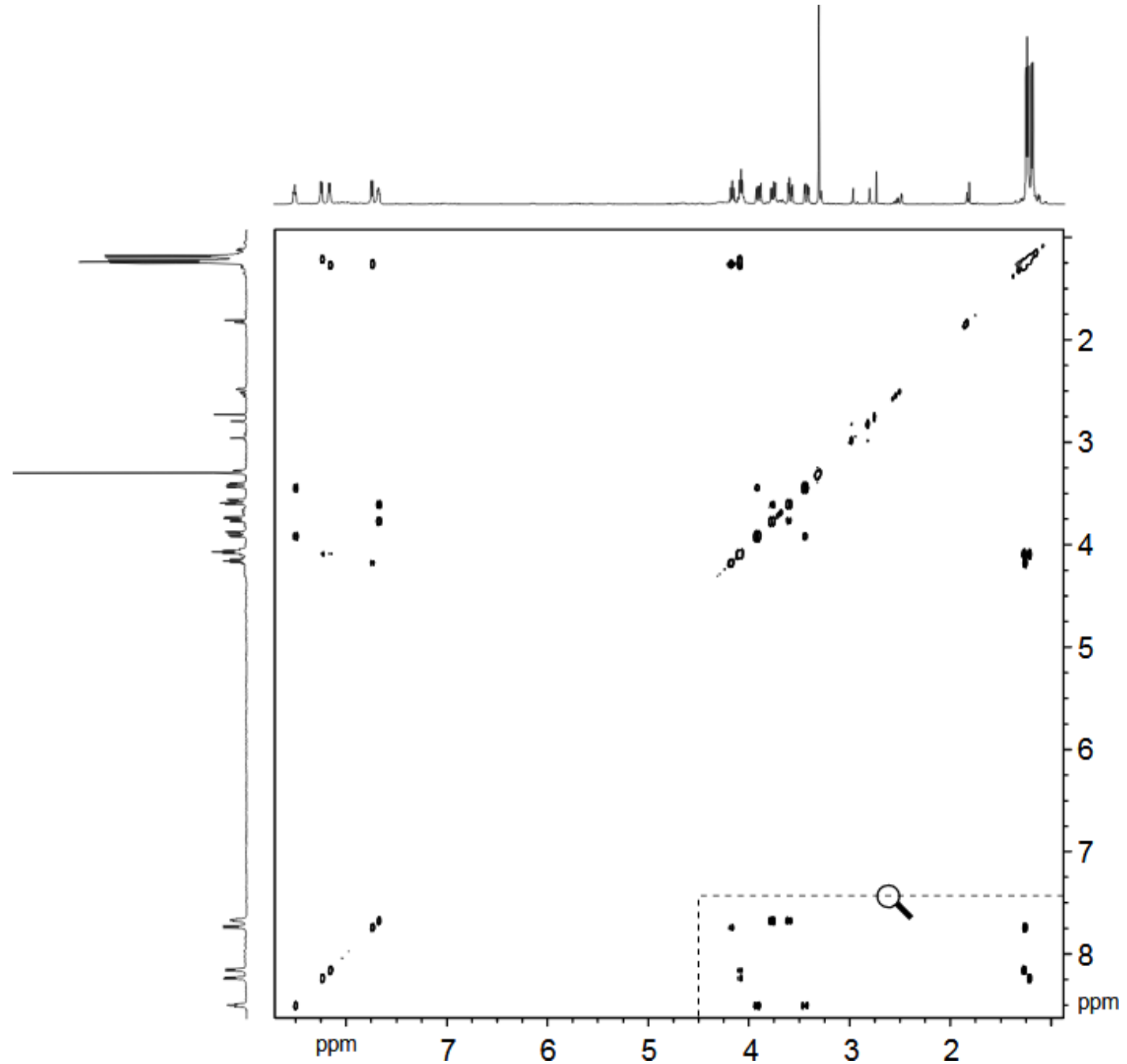
1H NMR



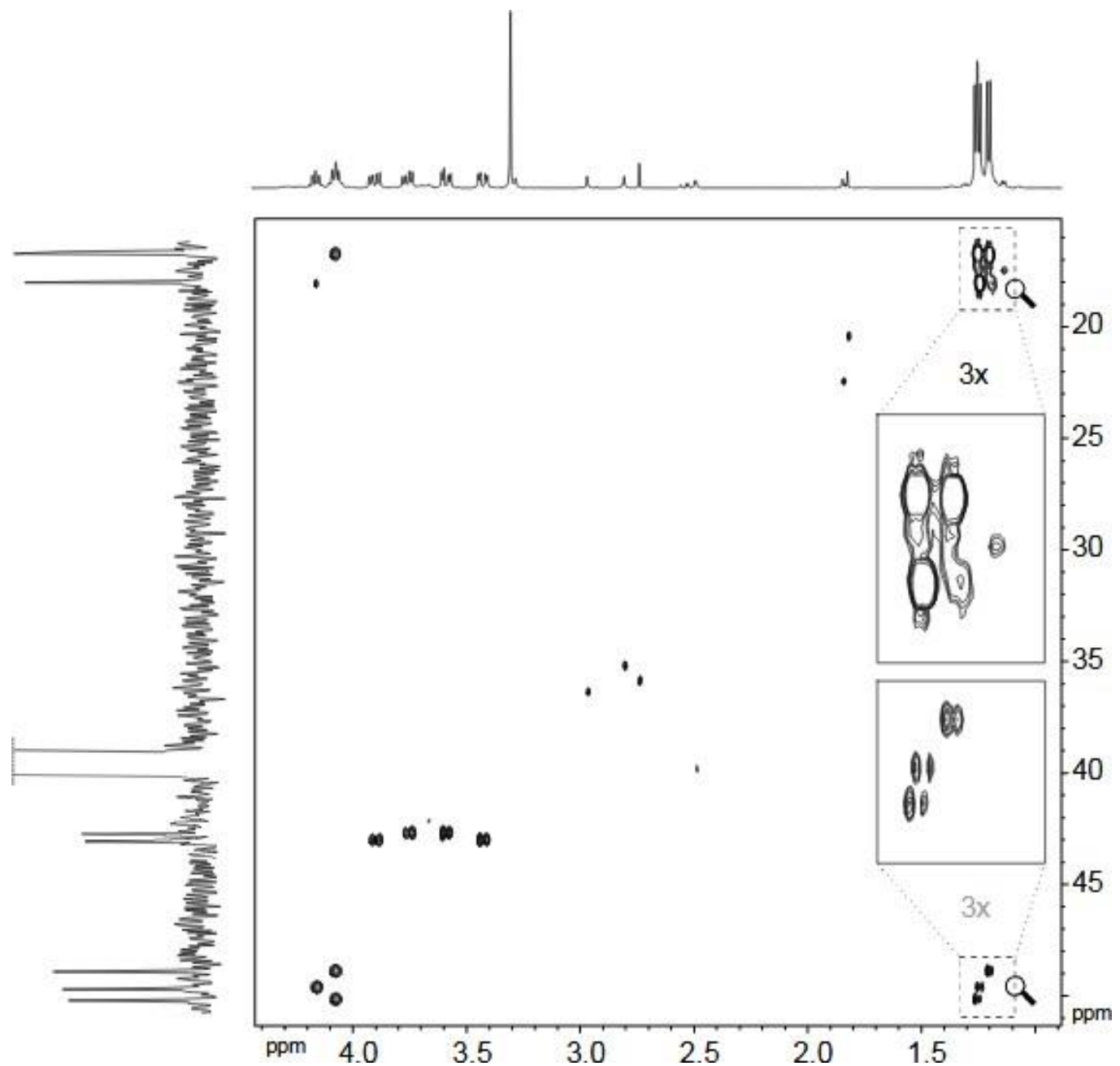
^{13}C NMR



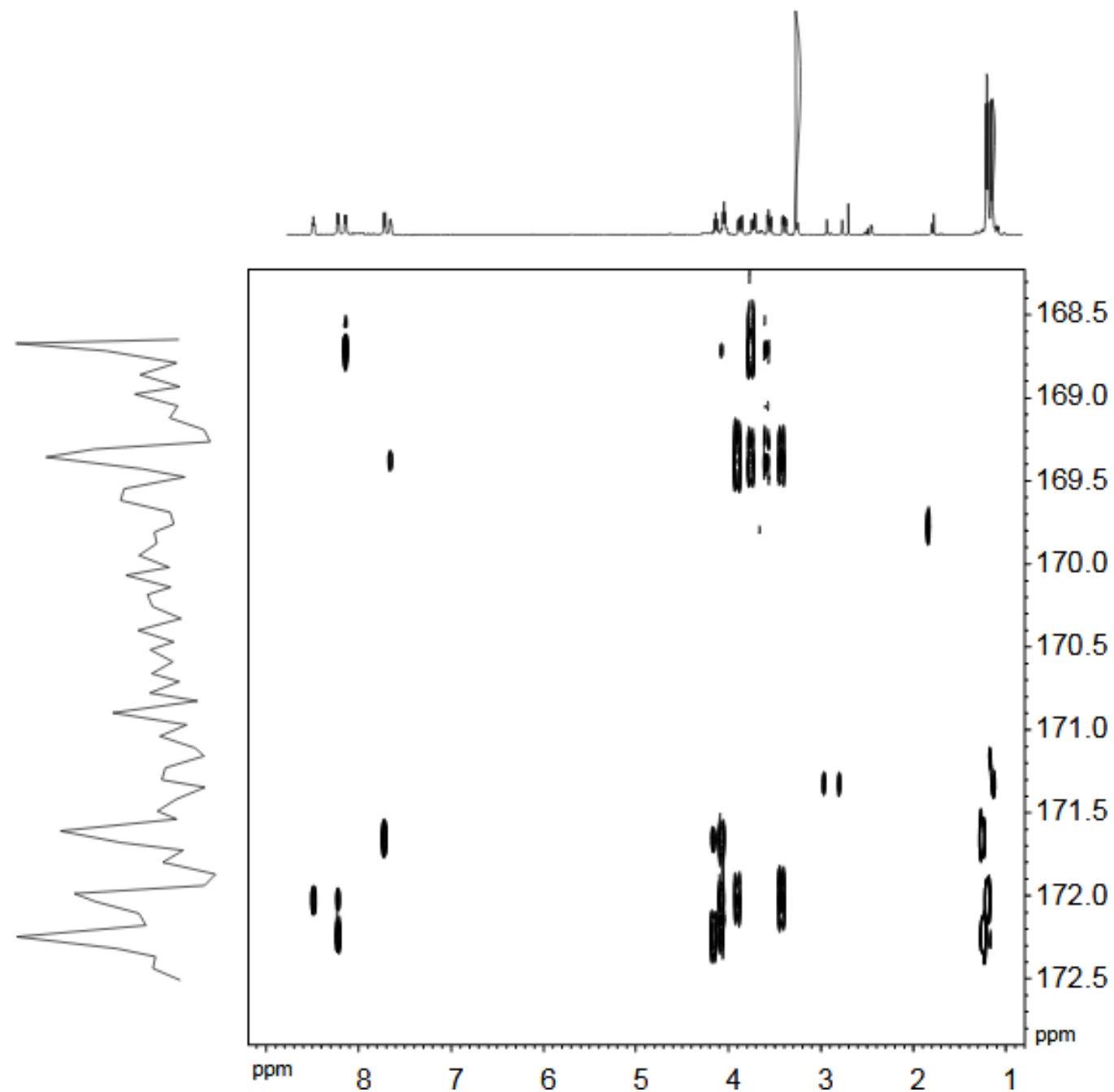
HH COSY



HC HSQC



HC HMBC



HH TOCSY

