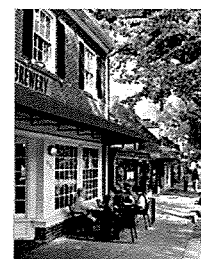


# DEPARTMENT OF HEALTH BEHAVIOR

## Housing and Transportation Hints

With three major universities, housing and transportation options in the Triangle (Chapel Hill-Durham-Raleigh) area are abundant. Housing and transportation also impacts non-residents' process for obtaining NC residency for tuition purposes. Here are some tips from current HB students and staff that will assist the transition to North Carolina and/or the Triangle.



### TRANSPORTATION

There are several transportation options to consider in the Triangle area. Some students choose to have a personal vehicle, while others opt for public transit or use of services such as ZipCar. Below are some helpful hints to figure out the best options for you:

#### Public Transportation

	What's Great	Things to Keep in Mind
<b>Chapel Hill Transit</b>	Chapel Hill/Carrboro operates a free bus system ( <a href="http://www.chtransit.org">www.chtransit.org</a> ) throughout most of the area around UNC.	Don't forget to check what routes your potential housing options may be on. Also, check how late and/or often the buses run.
<b>Triangle Transit</b>	Triangle Transit ( <a href="http://www.triangletransit.org">www.triangletransit.org</a> ) is a great way to get around the area. Express bus routes run from Chapel Hill to Raleigh, UNC to Duke (Robertson Express), and regular service from Durham to Chapel Hill and Hillsborough to Chapel Hill. You can also take TTA to/from RDU Airport for \$2/one-way. And there's free Wi-Fi on most buses.	Don't forget to check how late and/or often the buses run.
<b>Commuter Alternative Program (CAP)</b>	The Student Commuter Alternative Program (CAP) is a nationally recognized program designed to reward commuters who do not drive alone to campus. Benefits vary based on your primary commuting mode, selected at registration: <a href="http://www.dps.unc.edu/Transit/gettingtowork/CAP/studentcap.cfm">http://www.dps.unc.edu/Transit/gettingtowork/CAP/studentcap.cfm</a>	Make sure to register by August 15 <sup>th</sup> to take advantage of this program!

#### Personal vehicles (car, scooter, etc.)

	What's Great	Things to Keep in Mind
<b>NC license</b>	Obtaining a North Carolina driver's license in early August before classes begin is an important first step toward obtaining NC residency. For more information, visit: <a href="http://www.ncdot.gov/dmv/driver/">http://www.ncdot.gov/dmv/driver/</a> .	Even if you don't own a car, obtaining an NC license or getting a state ID is a crucial step toward establishing residency. Making sure you obtain these articles before classes begin is also essential. Waiting until the semester begins is one of the major reasons for being denied residency after 12 months.
<b>Titling &amp; registering your vehicle</b>	Titling and registering your vehicle (if you are the owner/lease) is a crucial step toward establishing NC residency. For more information on the process, visit: <a href="http://www.ncdot.gov/dmv/vehicle/title/">http://www.ncdot.gov/dmv/vehicle/title/</a> .	Give yourself ample time to get established in NC. You must wait to register your vehicle until after you receive your official NC Driver License. The Temporary Driving Certificate (TDC) cannot be used to register a vehicle.
<b>Vehicle taxes</b>	The vehicle tax assessment required by NC statutes is minimal. Typically, the tax is \$50-100 annually.	North Carolina Statutes require that all persons must annually list personal property that is subject to taxation unless specifically exempted or excluded from the tax base. This tax is applicable to motor vehicles.
<b>Parking and housing</b>	If you own a vehicle, parking is generally available at apartment complexes, single family homes, and townhouses throughout the area. Public parking is also available in downtown Chapel Hill (hourly basis).	You will want to check with apartment complexes to see if they require permits or limit cars per residence. Some neighborhoods require street parking permits.
<b>UNC parking permits</b>	The good news is that it's not impossible to obtain a UNC parking permit, though numbers are limited and you must meet certain eligibility criteria. Disability and hardship parking permits are available for students. Visit: <a href="http://www.dps.unc.edu/Parking/student/parkingoncampus/parkingoncampus.cfm">http://www.dps.unc.edu/Parking/student/parkingoncampus/parkingoncampus.cfm</a> .	If you live within a 2 mile radius of campus, you are not eligible to apply for parking. Registration opens in early July and is on a first-come, first-serve basis and are not cheap.

#### Biking and Walking

	What's Great	Things to Keep in Mind
<b>Biking</b>	By biking to UNC, you're not only engaging in healthy behavior, but you're supporting UNC's sustainability initiatives to reduce traffic congestion, the number of vehicles parked on campus, and vehicle emissions! You also have prime parking options, with numerous bike racks available outside most UNC campus buildings.	Bicycles on campus must be registered and permitted (free) through the Department of Public Safety. To register, visit: <a href="http://www.dps.unc.edu/Forms/Bike%20Registration/bike1.cfm">http://www.dps.unc.edu/Forms/Bike%20Registration/bike1.cfm</a> . UNC Student Stores also offers 50% off U-locks for registered bike owners.
<b>Walking</b>	A pedestrian-friendly campus is both necessary and desirable. In order to create and sustain a campus that is safe and efficient or the passage of people and vehicles, there must be a balance of responsibilities and reasonable expectations among all people traveling on campus, whether they are on foot, cycling or driving. Visit: <a href="http://www.dps.unc.edu/Transit/aroundcampus/pedestrianinfo/pedestrianinfo.cfm">http://www.dps.unc.edu/Transit/aroundcampus/pedestrianinfo/pedestrianinfo.cfm</a> .	The area is getting better, but not all neighborhoods are completely walkable. Check out the pedestrian paths and sidewalks around potential housing if you plan to do lots of walking!



**UNC**  
GILLINGS SCHOOL OF  
GLOBAL PUBLIC HEALTH

## HOUSING

Chapel Hill and its surrounding area boast abundant, affordable housing opportunities. Many HB students live off-campus in complexes or houses located adjacent to the free bus routes throughout Chapel Hill and Carrboro. Others opt to live in Durham, Hillsborough, Raleigh, or other areas. On-campus graduate housing is also available.

### HB housing and residency resources

Check out the Health Behavior's housing and residency resources page, part of the new student orientation site, for a list of sublets and leases available through current students and affiliates:

[http://www.sph.unc.edu/hbhe/hb\\_housing\\_and\\_residency\\_resources\\_22534\\_13542.html](http://www.sph.unc.edu/hbhe/hb_housing_and_residency_resources_22534_13542.html). HB Student Services also maintains a housing list, if you want to connect with other incoming and current students seeking housing or roommates.



### Location, Location, Location

Area	What's Great	Things to Keep in Mind
<b>Chapel Hill (CH)</b>	Chapel Hill is home to UNC. You're closest to campus, downtown, and the free public transportation system. Chapel Hill-Carrboro Schools are the best in the state!	Most undergrads living off campus live near UNC. A majority of the apartments are large complexes.
<b>Carrboro</b>	Only about a mile away, Carrboro has a laidback atmosphere and is home to many grad students. Carrboro has a cute downtown, complete with a co-op, farmers market, coffee shops, restaurants and bars. Shares schools and bus system with CH!	Carrboro has two general areas: North of 54 (closer to Downtown, more houses) and South of 54 (residential and apartment complexes), so make sure you know the proximity to downtown/campus.
<b>Hillsborough</b>	Take a short drive on NC-86N and you'll end up in this great, historic town. Hillsborough is home to a lively arts and culture scene, with a charming downtown filled with restaurants, co-op, and shops. Great for families. Orange County Schools.	Hillsborough is more ideal for families or students with partners. You can take a TTA bus to campus from downtown or a park and ride, but have to commute 25 minutes to campus each way.
<b>Durham</b>	Durham is a city with great restaurant, shopping, sports, and creative ethos. You can opt to live in a converted tobacco factory loft downtown or single family home in a more suburban setting; and, it's generally less expensive. The Bull City is also ranked as one of the best, most tolerant cities in the US. Just don't get caught wearing Carolina blue anywhere near Duke's campus during basketball season!	Living in Durham means you'll have a commute. Durham is pretty big, with neighborhoods in downtown, near Duke University and Ninth Street, more residential areas near Hope Valley Farms and Southpoint Mall, and even near Brier Creek/RTP/RDU Airport (near Wake County) so make sure you check a map first!
<b>Raleigh</b>	The state capital, Raleigh is only 35-45 minutes away with a big(ger) city feel (2 <sup>nd</sup> largest city in NC). Downtown Raleigh is considered hip and trendy with lots of dining and nightlife options. With several campuses downtown or in close proximity, you still can pick up a college town feeling.	Raleigh can be a difficult commute if you're driving on I-40 near rush hour (expect an hour each way). But, there are a few express buses with free Wi-Fi that can get you to Chapel Hill in about 45 minutes.
<b>Apex/Cary</b>	These suburbs are located closer to Raleigh but may be a good fit for families or partners who work in Raleigh or Research Triangle Park.	The commute in the morning/evening will be a little bit longer and there are definitely more single family homes than apartments.
<b>Alamance or Chatham counties</b>	Life in the country is sometimes just a little more peaceful and closer to nature. Whether you choose Saxapahaw or Graham (Alamance county), Pittsboro or Bynum (Chatham county), you'll likely be close to a lake or river for kayaking or hiking.	While housing is much more affordable in one of these areas (especially single family homes), you'll have a 30- 45 drive to a Park and Ride Lot to get a bus into Chapel Hill.

### On-campus graduate housing

UNC Housing and Residential Education offers apartment style housing for graduate students (Odum Village Apartments/1101 Mason Farm Road) and families (Baity Hill Student Family Housing). On-campus housing options are located on the perimeter of campus, accessible via campus shuttles/Chapel Hill buses. Parking is available, but limited (not included). For more information, visit: <http://housing.unc.edu/future-residents/graduate-students>.

### Off-campus housing

Whether you're looking for a one bedroom apartment, roommate share, single family home or townhouse for rent or purchase, there are many things to consider when selecting housing that fits your needs. You'll want to get a feel for the surroundings – grocery stores, pharmacies, schools, public transportation/parking, restaurants/bars, parks, walking/biking trails, and more. Also know how far you will be from campus, especially if you plan on walking or biking. Although many HB students have cars, a few of us don't and have managed to make it work by living close to what we need!

#### Price

Graduate students can find affordable housing in the Triangle. In Carrboro/Chapel Hill, expect to pay \$300-500 for a share or \$450-800 for a 1BR per month, depending on location. In Durham, expect to pay \$300-400 for a share or \$650-700 for a 1BR, depending on location (downtown or close to Southpoint Mall will be more expensive, while the neighborhoods around Duke just outside downtown are cheaper). Some apartments include all utilities, while others include water and sewer.



**UNC**  
GILLINGS SCHOOL OF  
GLOBAL PUBLIC HEALTH

### Amenities/Utilities

Don't forget to ask what is and is not included in the rent: gas, electric, water, garbage/recycling (some don't have curbside pickup). Amenities vary, but consider whether you have access to on-site or in residence laundry facilities, garbage disposal, cable, and fitness center/pool (though your UNC student fees give you access to on campus fitness centers and great classes!). You'll want central air, because while it's nice most of the year, you'll need it come July and August! If you have a pet, find out if there are extra charges or weight/breed restrictions.

### Safety

You can check local crime reports online at: <http://www.townofchapelhill.org/index.asp?NID=382>. However, keep in mind that these statistics may be a few years old and only include information about specific apartment complexes, not neighborhoods in Chapel Hill and Carrboro and not campus.

### Cell Phone Service

Check your signal while you're touring places to make sure that you'll be able to use your phone when you move in!

### Timeline for housing and establishing NC residency for tuition purposes

If you come in the spring or early summer to look for housing, many places will let you sign a lease well in advance. If you're moving from out-of-state, HB Student Services highly recommends that you move to North Carolina at the beginning of August. Moving in early August will allow you to spend time at the DMV obtaining your NC license (and studying for the driver's test!), getting your car inspected, and registering/titling it in NC. The DMV and Registration agencies (yes, you have to go to two different places!) are really busy during August. Going early with help save some headaches and having to stress about your residency application the next year. Check out the HB Housing and Residency Resources page for more information about establishing NC residency for tuition purposes:

[http://www.sph.unc.edu/hbhe/hb\\_housing\\_and\\_residency\\_resources\\_22534\\_13542.html](http://www.sph.unc.edu/hbhe/hb_housing_and_residency_resources_22534_13542.html).

### Listings

Here are some common sources used by HB students for identifying housing:

Heels Housing	<a href="http://www.heelshousing.com/">http://www.heelshousing.com/</a>	Louise Beck Properties	<a href="http://www.louisebeckproperties.com">http://www.louisebeckproperties.com</a>
Apartment Guide	<a href="http://www.Apartmentguide.com">http://www.Apartmentguide.com</a>	Cool Blue Rentals	<a href="http://www.coolbluerentals.com">http://www.coolbluerentals.com</a>
Craigslist	<a href="http://www.craigslist.org/raleigh">http://www.craigslist.org/raleigh</a>	GSC	<a href="http://www.gscapartments.com">http://www.gscapartments.com</a>
Carolina Realty	<a href="http://www.carolinarealtyinc.com">http://www.carolinarealtyinc.com</a>	Chapel Hill Rent	<a href="http://www.chapelhillrent.com">http://www.chapelhillrent.com</a>

### Been There, Done That: Places HBs have lived and liked

Location	Complexes		Neighborhoods	
<b>Chapel Hill</b>	Odum Village Timber Hollow Alta Springs	Colony Lake Finley Forest Shadowood	Meadowmont Southern Village	Vance/Ransom/McCauley Purefoy/North Columbia Glen Lennox
<b>Carrboro</b>	Autumn Woods The Bridges Colonial Village/Highland Hills	Rock Creek Poplar Place	N. Greensboro St. area Laurel St/Farmers Market	Fidelity/Davie/Poplar Carr/Roberson/Sweet Bay
<b>Durham</b>	Audubon Lake Colonial Village/Woodlake Copper Mill	Highgate Pine Ridge The Lodge at Southpoint	Trinity Park American Tobacco Tuscaloosa/Lakewood/Rockwood	West Village/Golden Belt Woodcroft Hillsborough Rd/Duke Hosp

Students suggest **avoiding** the following complexes as they may not provide the best atmosphere for studying:

Chapel Ridge, Mill Creek, Ashley Forest, Chapel View, Granville Towers, Royal Park, or any of the complexes on Hillsborough Street between Franklin Street and MLK Blvd.



UNC

GILLINGS SCHOOL OF  
GLOBAL PUBLIC HEALTH

