

DAT Practice Test Errata Sheet

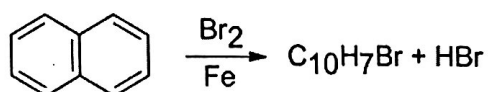
SNS #17 The correct answer should be A on the Answer Keys page.

SNS #18 The correct answer should be E on the Answer Keys page.

SNS #19 The correct answer should be C on the Answer Keys page.

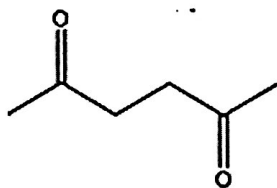
SNS #72 Equations that accompany the question are extraneous. The stem should read as follow:
Oxymercuration-demercuration of which of the following produces a secondary alcohol?

SNS #89 Diagram in the question stem should read as follow:

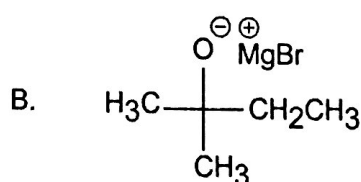


SNS #90 Question stem and diagram should read as follow:

What is the structure of the starting material, which upon ozonolysis and subsequent treatment with zinc and water, yields the following product?



SNS #93 Diagram for option B should read as follow:



SNS #97 The correct answer should be A on the Answer Keys page.

QRT #36 Question stem and diagram should read:

City workers demarcate a rectangular area that measures 120 feet x 60 feet. If the diagonal of the rectangle is plotted, then which of the following is the smallest angle for triangle ABD?"

