

Atlas of Histology

Table of Contents

Atlas of Histology - Table of Contents

Introduction

Chapter 1: The Cell and the Cytoplasm

OVERVIEW FIGURE 1.1 Composite illustration of a cell, its cytoplasm, and its organelles.

OVERVIEW FIGURE 1.2 Composition of cell membrane.

Figure 1-1 Apical surfaces of ciliated and nonciliated epithelium. x10,600.

Figure 1-2 Junctional complex between epithelial cells. x31,200.

Figure 1-3 Basal regions of epithelial cells. x9,500.

Figure 1-4 Basal region of an ion-transporting cell. x16,600.

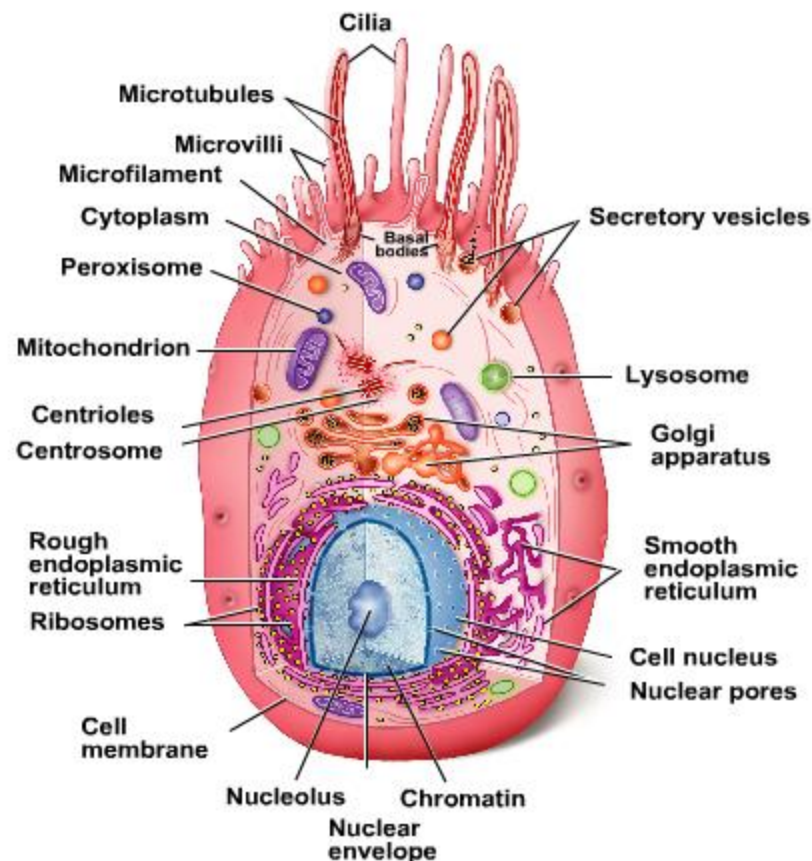
Figure 1-5 Cilia and microvilli. x20,000.

Search

NAVIGATION

SLIDE DATA

OVERVIEW FIGURE 1.1 Composite illustration of a cell, its cytoplasm, and its organelles.



OVERVIEW FIGURE 1.1 Composite illustration of a cell, its cytoplasm, and its organelles.